

# Athena Society



B R I E F I N G S

December 1994

## 1994-95 OFFICERS AND BOARD

PRESIDENT ..... MIRIAM MASON  
PRESIDENT-ELECT ..... RUTH HIMES  
VP/MEMBERSHIP ..... SUSAN McLAIN  
VP/PROGRAM ..... ANN ROSS  
SECRETARY ..... ANNE KANTOR  
TREASURER ..... JUDY MUNSON  
IMM. PAST PRESIDENT... SUSANNA GRADY

### BOARD

DEIDRE BIBBY  
ELAINE COLLEGE  
NANCY FORD  
ALENE MAHIN  
MARGARET MATHEWS  
MIRIAM STAMPS

### MEMBERSHIP COMMITTEE

AMELIA BISHOP  
NONI BRILL  
GABRIELE FAULKNER  
PAM JORDAN  
ELLEN KIMMEL  
WILMA SMITH  
ALTERNATE: ANN OLSON

ADMINISTRATOR  
ELEANOR HUBBARD  
251-9172

**ATHENA SOCIETY**  
P.O. Box 10813  
TAMPA, FLORIDA 33679

## Upcoming Meeting

**WHEN:** Thursday, December 1, 1994  
5:30 p.m. - Cocktails (Cash Bar)  
6:30 p.m. - Dinner

**WHERE:** Tampa Yacht & Country Club  
5320 Interbay Boulevard  
(Cars will be valet parked.)

**PROGRAM:** Holiday Dinner & Gift Exchange (see below)  
"Repackaging Santa"

**RSVP:** By November 28 with enclosed card or  
call Eleanor Hubbard (251-9172).

### MEMBERS ONLY - NO GUESTS

We'll launch a light-hearted romp thru a politically-correct holiday season. Those who remember with fondness the holiday skits of the past should feel the cockles of their hearts warming even as they read these words. And for those who don't...


Anyone with musical ability (particularly singing) is urged to call **Sandy Frye**. The planning committee for this merry meeting was comprised of **Katie Brown**, **Terry Cone**, **Elaine Shimberg**, **Louise Thompson** and several more. (Katie has already left town; will the others be far behind?)

Launch the holiday season with good friends, good food and a great program.


Please bring a small indulgence that you wouldn't ordinarily purchase for yourself but would love to receive. This needn't be - and shouldn't be - expensive...just special. We'll close the evening by exchanging with other members.



## Holiday Buffet



Don your holiday finery and be prepared (as usual) for superb food and the most stimulating crowd in town when Athena members gather at the home of **Gwynne Young** for this annual event. Gwynne is at 4208 Beach Park Drive just west of Lois Avenue. There's no charge for members and one guest; additional guests are \$20. Make your reservations either by indicating on enclosed red card or by phoning Eleanor Hubbard prior to December 6. Please list your guests' names. Party hours are 6 to 8 p.m.



## President's Corner

The elections are now over. Athena should be proud that from an organization of less than 140 members, five of our members made the commitment, took the time and gave the energy to run for public office. Some won and some did not, but it is important that you gave of yourself. Congratulations to **Dottie Berger** and to **Candy Olson**. Good luck to both of you in the challenges that lay ahead.

Special recognition is in order for three of our members - **Barbara Koenig**, **Mary Estes** and **Carol Dyches**. They expended substantial time and energy and, of course, creativity in revising our Society's promotional brochure and in preparing a membership certificate. With luck, that certificate will be ready for distribution to members who attend the Athena Holiday Party.

**Helen Gordon Davis** has volunteered and therefore was appointed to serve as the participant of Athena's membership in the Greater Tampa Chamber of Commerce. Likewise, **Carmen Bolt** has volunteered and therefore was appointed as Athena's representative on The International Alliance Board. Her term will be for two years.

## Athena "Housekeeping"

As **Miriam Mason** noted in her message, Athena's promotional brochure has been revised and updated (and was available at the November luncheon). It will be on the registration table at all meetings during the year.

Membership directories are hot off the press and will be distributed at both Athena functions during December. The format is slightly different and, for the first time, the books are bound rather than in loose-leaf form: more convenient to slip in a briefcase or purse. We hope you'll approve.



## Media Response

Miriam Mason, as president and in coordination with Public Issues Chair Linda Goldstein, appointed a subcommittee of the PI committee made up of Patti Breckenridge, Sandy Frye and Louise Thompson to recommend to the board a procedure for Athena to respond to the press. Based upon their recommendation, the board has approved for submission to the membership the following media procedure. At the December 1 dinner the membership will vote to approve or disapprove this procedure. If you are not able to attend and would like to vote by proxy, please send a signed letter - either approving or disapproving - to Eleanor Hubbard at P.O. Box 10813, Tampa, 33679 or have it delivered at the time of the meeting. Enclosed with this newsletter is a separate sheet containing suggested responses to media questions.

### Responding to the Media

- [1] The president or a designated board member may – on behalf of the Society – quote to the press directly from our purpose, policy statements or adopted positions.
- [2] When the media's question has nothing to do with our purpose, policy statements or adopted positions, no one will comment to the media on behalf of the Society.
- [3] When the media's question has everything to do with our purpose, policy statements or adopted positions, but calls for greater specificity, the president or a designated board member must seek the opinion and approval of the board before issuing a statement.
- [4] When a majority of the board is in agreement on making a statement to the media based on greater specificity of our purpose, policy statements or adopted positions, the president or a designated board member has the authority to do so. The statement, then, is to be prefaced with, "The Athena board feels that...." [See response suggestions enclosed.]
- [5] It is advisable to run statements through one of the membership's PR specialists.
- [6] When no complete public record [purpose, policy statements or adopted position statements] exists on a topic or an issue, it would be irresponsible for any Athena member to officially comment on behalf of the Society.
- [7] Anyone can speak to the media as an INDIVIDUAL. But, one is advised to do so with caution.
- [8] When an individual member is not in a position to make a statement to the press AS AN INDIVIDUAL, she is advised to tell the press that. Members are strongly discouraged from offering the Society as a substitute commentor without first clearing same with the president or a designated board member. It is suggested that members who feel the Society ought to comment on urgent issues telephone the president to relay same. If the board determines that a comment is appropriate, they can prepare a statement and then initiate contact with the media. If the board deems a comment inappropriate, it will not have been put in the "hot seat" unnecessarily.



## **Membership**

*by Suzy McClain, Chair*

Members who intend to sponsor candidates for membership are urged to bring them to the January and/or February luncheons in order to meet members of the Membership Committee. Luncheons are scheduled for January 5 and February 2. Deadline for submission of nomination forms will be February 15. Any questions regarding membership may be directed to Vice President/Membership **Suzy McLain**, 253-0421.

## **Retreat**

*by Mary Scriven, Chair*

So many of you answered the retreat survey, seemed so enthusiastic and had so many good ideas. I know you are anxious to hear the results. Well, here they are.

The majority of respondents indicated a preference to keep cost to between \$250 and \$300 and to keep travel time to two hours or less each way. The three top facility preferences were the Long Boat Key Club, South Seas Plantation and the Boca Grande Club, in that order. However, South Seas Plantation is farther away than 56% of the respondents said they were willing to travel. Nevertheless, the committee will consider all three facilities as possible locations.

We resoundingly rejected the notion of "roughing it;" we want a deluxe facility. We love good food; it is a must. And we want to be pampered; spa and exercise fa-

## **Committee Reports**

cilities required. A beach front location and cultural activities also ranked high in the feature preference category.

Regarding programming, there was overwhelming preference for morning programs with social time in the afternoon (92.6%). There was limited interest in spending time talking about Athena and its goals. Enrichment, self-awareness, women's issues and intra-active programming ranked high in topics and formats.

Thus, we have enough information to put together an excellent retreat at a location and a price acceptable to all. Unfortunately, we cannot guarantee that all of you will be able to attend. The only "first" preference we could glean the results for was the time frame between July 16-31, receiving 23 votes. That was also the leading second preference. June 16-30 (14 votes), July 1-15 (11 votes) and August 1-15 (14 votes) ranked equally as the first preference for all who did not choose July 16-31. Currently we are looking at July 16-31, probably July 21-22, so mark your calendars. The conflicts which prevent your attending retreats were vacation, family and work which, of course, we cannot do anything about. What we can and will do to ameliorate this situation is firm up a date within the month so that we can allow you as much flexibility as possible in arranging your schedules.

Please make every effort to attend; this year promises to be the best ever. Thank you for your assistance in helping us to serve you better. Call with any great ideas. We'll keep you posted on developments.

# Athena Society



B R I E F I N G S

November 1994

## 1994-95 OFFICERS AND BOARD

PRESIDENT ..... MIRIAM MASON  
PRESIDENT-ELECT ..... RUTH HIMES  
VP/MEMBERSHIP ..... SUSAN McLAIN  
VP/PROGRAM ..... ANN ROSS  
SECRETARY ..... ANNE KANTOR  
TREASURER ..... JUDY MUNSON  
IMM. PAST PRESIDENT... SUSANNA GRADY

### BOARD

DEIDRE BIBBY  
ELAINE COLLEGE  
NANCY FORD  
ALENE MAHIN  
MARGARET MATHEWS  
MIRIAM STAMPS

### MEMBERSHIP COMMITTEE

AMELIA BISHOP  
NONI BRILL  
GABRIELE FAULKNER  
PAM JORDAN  
ELLEN KIMMEL  
WILMA SMITH  
ALTERNATE: ANN OLSON

ADMINISTRATOR  
ELEANOR HUBBARD  
251-9172

**ATHENA SOCIETY**  
P.O. Box 10813  
TAMPA, FLORIDA 33679

## Upcoming Meeting

- WHEN:** Thursday, November 3, 1994  
11:45 a.m. - Lunch
- WHERE:** Wyndham Harbour Island Hotel  
725 So. Harbour Island Blvd.
- PROGRAM:** Domestic Violence: The Community's  
Role in Stemming the Tide
- SPEAKER:** Lt. H. M. Evans, Director  
PRIDE  
Newport News, VA
- COST:** Guests - \$20
- RSVP:** By October 31 with enclosed card or  
call Eleanor Hubbard (251-9172).

### OPEN MEETING - GUESTS WELCOME

Domestic violence - unfortunately an old phenomenon - has suddenly come to the fore and, fortunately, is capturing the interest of community leaders across the nation.

One of the communities that has dealt successfully with at least one aspect of domestic violence is Newport News, VA. The police department there has initiated a method of responding which has been instrumental in reducing the number of domestic homicides since its initiation in 1986. Characterized by one study as a public health approach

*Continued on Page 2*



## Upcoming Meeting

*Continued from Page 1*

and a criminal justice issue, it assumes that law enforcement methods alone cannot stop the tide of domestic violence but must work in unison with agencies in the mental health field as well as with prosecutors and the court system.

After implementation of the PRIDE (Police Response to Incidents of Domestic Emergencies) plan, homicides have declined as have calls to police to respond to domestic disturbances. Hear Lt. H.M. Evans describe the metamorphosis. Also speaking briefly will be Robin Hassler, Chairman of the Governor's Task Force on Domestic Violence. Invitations have been extended to a host of community leaders including representatives from the Tampa Police Department, Sheriff's Department, the State Attorney's Office plus a number of social agencies in the city and county. These individuals will be able to offer perceptions on our own community's approach to domestic violence, if needed.

Guests welcome! We're expecting a crowd, so please make your reservations early.

Special guest will be Marny Needle, President of The International Alliance, who will speak briefly during lunch. See story below for additional TIA news.

## TIA News: November 3 Reception Athena Seeking Representative

Athena members who don't meet TIA President Marny Needle at the November 3 luncheon will have another opportunity that evening. The Network of Executive Women will be hosting a reception in Marny's honor from 5:30 to 7:00 p.m. at the Crowne Plaza Hotel (formerly Omni), 700 No. Westshore Blvd. It's a cash bar with hors d'oeuvres provided for \$10 per person. RSVP by October 29 to Eleanor Hubbard, 251-9172.

President **Miriam Mason** is seeking a member to serve as Athena's representative on The International Alliance board which meets three times a year. Board term is two years, and the rep is expected to attend at least two of the three meetings. Currently no funds are provided through Athena. For details on dates and locations, contact Eleanor Hubbard.

Enclosed is a copy of the Alliance's latest newsletter.



## President's Corner

We, we did it. Some of you wondered how the Jan Platt Salute (October 10) was really going to be a surprise if it was announced in our September newsletter. The newsletter that Jan got did not have the notice of the surprise. For those of you who were unable to attend, the Tampa Bay Regional Planning Council gave an outstanding luncheon recognition for Commissioner Jan K. Platt. Athena was honored to participate in that recognition. As President, I spoke about Jan's accomplishments and what she has meant to women. I believe the highlight of Jan's service to Athena has been as a role model. Women in this community have and are benefitting from a role model that is worthy of emulation. Jan's model is focused, honest, passionate about important issues, interested in doing the right thing, a politician who is oblivious to politics, always prepared, direct, courageous, in touch with people, kind, tough. These characteristics describe a 'steel magnolia.' At a time when so many turn out to be other than what was represented, those of us who need a role model can look at Jan Platt and be very clear about who she is. A person with qualities that we will strive to develop. I am so glad she has been there for the women in Tampa.

**Sylvia Kimbell** is another of those great women who has made her mark in our community. Athena's tribute to her at our October 6 membership luncheon brought a tear to everyone's eye. Our community and Athena are lucky to have shared and benefitted from her life.

Athena is a great group of women. If you don't know each one, invite them to go to lunch or dinner. You will find a jewel to treasure.

## Message from Candy Olson

Many, many thanks to all the Athena members who helped me win my campaign for School Board! I would list all of you but I know I will forget someone...YOU know who you are! We are such a talented group, and we can do amazing things when we work together. I will be sworn in at 7:30 on Tuesday evening, November 22 (School Board building, 901 E. Kennedy), and would love to see some Athena friends in the audience. If you can't come, tune in to the Educational Channel (16 in the county; 20-21 in the city). And THANK YOU!

## Athena "Housekeeping"

Dates of interest for remainder of the year:

November 3	General meeting (luncheon)
December 1	Holiday dinner (closed meeting)
December 10	Holiday Buffet (guests welcome)

Don't forget to bring your donation of sample-size toiletries for The Spring. We'll be collecting at meetings all year long.



## News About Members

As of November 1, **Katie Brown** will be a resident of Worcester, MA where husband Jack has accepted the position of Interim President at Worcester Polytechnic Institute (his alma mater). One of the oldest schools in New England, WPI has a student body of 3600 and is about 40 miles from Boston. The Browns will return to Tampa during the summer or early Fall of '95 but in the meantime can be reached at One Drury Lane, Worcester, MA 01609; 508/753-2662.

We extend our sincere sympathy to **Barbara Pennington** for the recent loss of her father.

Correction: **Mary Scriven** and **Laura Waller** have been accepted in the Leadership Florida Class of '95, not Leadership Tampa as was reported last month.

**Anne Kantor** is the proud grandmother of six! Son David and wife Fran welcomed a third son into their family on September 21, and Anne flew to Boston to welcome the little guy.

**Gwynne Young** has been appointed by Governor Lawton Chiles to a four-year term on the Second Appellate District Nominating Commission.

**Marsha Griffin Rydberg** has been elected Chair-Elect of the Tampa Downtown Partnership.

## Report of Special Bylaws Meeting

At the special meeting of the Society held on September 12, all the provisions of the bylaws to which changes had been proposed were approved.

The proposal by **Pat Frank** for selection of the nominating committee was adopted by an overwhelming majority. Under this procedure six (6) members will be elected each year to serve as the nominating committee. Four (4) will serve as regular members and two (2) will serve as alternates. To be eligible, one must have been a member of the Society in good standing for two (2) years.

No member of the nominating committee may serve for more than two (2) consecutive years. No member of the committee may be nominated for an office.

The board is discussing and will implement a procedure to effectuate the new nominating committee process.



# Athena Society



B R I E F I N G S

October 1994

## 1994-95 OFFICERS AND BOARD

PRESIDENT ..... MIRIAM MASON  
PRESIDENT-ELECT ..... RUTH HIMES  
VP/MEMBERSHIP ..... SUSAN McLAIN  
VP/PROGRAM ..... ANN ROSS  
SECRETARY ..... ANNE KANTOR  
TREASURER ..... JUDY MUNSON  
IMM. PAST PRESIDENT... SUSANNA GRADY

### BOARD

DEIDRE BIBBY  
ELAINE COLLEGE  
NANCY FORD  
ALENE MAHIN  
MARGARET MATHEWS  
MIRIAM STAMPS

### MEMBERSHIP COMMITTEE

AMELIA BISHOP  
NONI BRILL  
GABRIELE FAULKNER  
PAM JORDAN  
ELLEN KIMMEL  
WILMA SMITH  
ALTERNATE: ANN OLSON

ADMINISTRATOR  
ELEANOR HUBBARD  
251-9172

### ATHENA SOCIETY

P.O. Box 10813  
TAMPA, FLORIDA 33679

## Upcoming Meeting

**WHEN:** Thursday, October 6, 1994  
11:45 a.m. - Lunch

**WHERE:** Centre Club  
Top of One Urban Center  
Kennedy at Westshore

**PROGRAM:** Tribute to Sylvia Kimbell

**COST:** Guests - \$20

**RSVP:** By October 3 with enclosed card or  
call Eleanor Hubbard (251-9172).

### OPEN MEETING - GUESTS WELCOME

**Sylvia Kimbell** blazed many trails and was in the forefront of providing leadership for the citizens of Hillsborough County, both as an educator and as a county commissioner.

With an eye to her legacy as they pay tribute to Sylvia, her work and her accomplishments will be **Barbara Romano, Emmy Acton, Louise Thompson** with Ruth Hall, Supervisor of Multi-ethnic programs, Hillsborough County School System, and Debra Shenefelt, former campaign manager.

Members of Sylvia's family have been invited to join us for this special occasion. Guests are welcome and encouraged!



## Membership Process to Begin

The Membership Committee would like to again alert potential sponsors of candidates for membership that current Policy and Procedures require that potential sponsors attend an initial interest meeting.

These meetings will cover membership criteria, intake procedures, profiles of candidates, etc.

The first meeting has been scheduled for 5:30 p.m. on October 24, in the offices of Fowler, White, Gillen, Boggs, Villareal & Banks, 501 East Kennedy Boulevard (Mack One Building), Suite 1700, and the second meeting will be held immediately following the Athena Luncheon Meeting on November 3.

Nominations will not be accepted by the Membership Committee unless the sponsor or co-sponsor has attended one of these informational meetings.

It should be pointed out that only ten memberships are open for this year and that The Athena Society endeavors to achieve diversity in as many respects as possible.

Remember also that there will be no cocktail parties this year to introduce prospective members to the Membership Committee. That is to be accomplished by bringing prospective members to luncheon meetings; notify Eleanor Hubbard and she will make appropriate seating arrangements. (This cannot be handled at the last minute, so please call her by the Friday prior to lunch). It is suggested that this process begin in October.

Any questions regarding the membership process may be directed to VP/Membership Susan McLain, 253-0421.

## Athena "Housekeeping"

Dates of interest for remainder of the year:

October 6	General meeting (luncheon)
November 3	General meeting (luncheon)
December 1	Holiday dinner (closed meeting)
December 10	Holiday Buffet (guests welcome)

Don't forget to bring your donation of sample-size toiletries for The Spring. We'll be collecting at meetings all year long.



## President's Corner

Congratulations to **Sandra Wilson** on her election to the Hillsborough County Commission. Congratulations also to **Dottie Berger, Paddy Moses** and **Candy Olson**. All three will be in the October 4 runoffs and hopefully the November 8 general election. Please support them with your time and money and, of course, your vote.

The newly formatted Athena directory should be ready in mid-October as will the the revised Athena brochure. Both are continuing efforts by your Board to present Athena as a professional organization. The Board is also considering a membership certificate which would be presented to each member. This certificate would be of a quality for framing for those who would enjoy proudly displaying membership in this organization. A final decision on this certificate should be made in October. The directory, the brochure and the membership certificate are what I call "tweaking." They are small advances which help fine-tune this organization as it continues to move forward.

Athena is now in its 18th year. Our 20th will be here before we know it. The Board agreed that Athena should recognize its 20th year, so if you have any thoughts and suggestions on special ways to do that, let me know. Likewise, if you would like to serve on an initial planning committee, please let me know of your interest. This passage of time is accentuated with our tribute to Sylvia Kimbell. It reminds us that time may be short and we should enjoy, give and accomplish while we can.

## Athena to Reserve Table at Mayor's Breakfast

The Twelfth Annual Mayor's Breakfast will be held at 7:30 a.m. on Wednesday, October 5, at the Tampa Convention Center. Sponsored by the Tampa Private Industry Council, it is held to honor individuals and corporations that have contributed significantly to the public/private partnership in employment.

Representing Athena on the "inside" will be **Mayor Sandy Freedman** and **Linda Goldstein**, creator of the feature video.

Anyone wishing to sit at the Athena table may make reservations by calling Eleanor Hubbard (251-9172) prior to September 29. The table for eight will be filled on a first-come basis. Your check for \$11, payable to Athena, may be mailed to P.O. Box 10813, Tampa, 33679.



## News About Members

Several members suffered losses this past month: **Miriam Mason's** mother passed away, **Judy Rogers'** father and **Sylvia Richardson's** husband. To each of them we extend our deepest sympathy and caring concern.

**Helen Gordon Davis, Barbara Romano** and **Alex Sink** recently attended the annual Majority Council Conference of EMILY's List in Washington, D.C. They heard updates on congressional and gubernatorial campaigns for women running across the country. Highlight was a reception at the White House hosted by Hillary Rodham Clinton.

On October 1 **Nancy Ford** will receive the highest honor conferred by Randolph-Macon Woman's College: the 1994 Alumnae Achievement Award. It is given to alumnae who personify the value of a liberal arts education and who have brought distinction to themselves and to the college through their outstanding accomplishments.

**Margaret Mathews** and **Laura Waller** have been accepted for Leadership Tampa Class of '95.

Laura also has been elected Secretary of the Tampa Convention Hotel; **Sharon Kilpatrick** is the President.

**Emmy Acton** has been installed as president of the Florida Association of County Attorneys for a one-year term.

**Donna Fabry**, suffering from Chronic Fatigue Syndrome, has taken an extended leave from TECO and is staying with her mother in Paducah, KY. The good news is that she is doing well and has improved a great deal since going there several months ago. If you'd like to drop her a card, her address is 2563 Harrison Street, Paducah, KY 42001.

**Margaret Fisher** will speak on at USF on Friday, September 30, 3:30 p.m. in Room 126, Cooper Hall on "A Saving Grace: The Gift of Laughter". The lecture will focus on light-hearted verse including a Frivolity of Females plus a sampling of limericks and other exotic forms of occasional verse. The public is invited and (quote Margaret) "a good sprinkling of Athenaic groans, giggles and guffaws would be greatly appreciated by the speaker".

**Susan Dellinger** is in Dallas this month taping a series entitled "The Woman Buyer" for GM dealerships worldwide. She recently spoke in San Francisco at the women veterinarians' convention.

# Athena Society



B R I E F I N G S

September 1994

## 1994-95 OFFICERS AND BOARD

PRESIDENT ..... MIRIAM MASON  
PRESIDENT-ELECT ..... RUTH HIMES  
VP/MEMBERSHIP ..... SUSAN McLAIN  
VP/PROGRAM ..... ANN ROSS  
SECRETARY ..... ANNE KANTOR  
TREASURER ..... JUDY MUNSON  
IMM. PAST PRESIDENT... SUSANNA GRADY

### BOARD

DEIDRE BIBBY  
ELAINE COLLEGE  
NANCY FORD  
ALENE MAHIN  
MARGARET MATHEWS  
MIRIAM STAMPS

### MEMBERSHIP COMMITTEE

AMELIA BISHOP  
NONI BRILL  
GABRIELE FAULKNER  
PAM JORDAN  
ELLEN KIMMEL  
WILMA SMITH  
ALTERNATE: ANN OLSON

ADMINISTRATOR  
ELEANOR HUBBARD  
251-9172

**ATHENA SOCIETY**  
P.O. Box 10813  
TAMPA, FLORIDA 33679

## Upcoming Meeting

**WHEN:** Thursday, September 1, 1994  
11:55 a.m. - Lunch

**WHERE:** Centre Club  
Top of One Urban Center  
Kennedy at Westshore

**PROGRAM:** Nutrition, the Brain and Behavior  
(You Really ARE What You Eat)

**SPEAKER:** Lynn Wecker, Ph.D.  
Professor and Chair  
Department of Pharmacology and Therapeutics  
University of South Florida

**COST:** Guests - \$20

**RSVP:** By August 29 with enclosed card or  
call Eleanor Hubbard (251-9172).

### OPEN MEETING - GUESTS WELCOME

Dr. Wecker, the only female chair in the entire USF Medical Center, is a nationally known speaker and author who has done extensive research related to the brain. Following postdoctoral training at Vanderbilt University, she taught at the Louisiana State University Medical Center and in 1990 relocated to USF. She'll share some of her fascinating research on the relationship between food and brain power. Join us!

The Program Committee, under the direction of VP Ann Ross, has chosen for 1994-95 the theme "The Whole Healthy Woman: A Balanced Life". This program obviously ties in with that theme and launches it nicely.

Dates for the remainder of '94 that you may wish to calendar now include:

September 12	Special bylaws meeting
October 6	Tribute to Sylvia Kimbell
November 3	Program on domestic violence
December 1	Holiday dinner
December 10	Holiday buffet



## "First Person" Stories from Retreat, Part 2

*During group discussion on Sunday morning, members were asked to share an experience they'd had in Athena and describe how it had changed them. Below is installment #2 of what was revealed.*

When I heard about the Operation Jumpstart project, I was moved to help. I remembered how much I had benefitted from the guidance and advice of other women during a very low period of "starting over" in my life. I knew I had to "return the favor" but had no idea what I could do. I went to the first mentoring session and was amazed at the unselfish, open manner in which the panelists shared their stories and advice with the women in transition who attended the session. I also learned a tremendous amount about how much the panelists had overcome to accomplish their considerable goals. I was very proud of the Athena members and I realized that I could help by doing the same thing when we broke up into smaller discussion groups. I told my story to a group of strangers for the first time in my life and they, too, were amazed. Later these women came to me to say how it had helped them. I was able to give to them because the Athena panelists had set the example by giving first. I've felt much closer to Athena members ever since.

I came to Athena with the expectation of seeing volatile, activist women and was surprised to view women who had made it but were quieter and more sedate than I imagined. One woman in particular stood out. She was a very beautiful Southerner with a slight drawl who I had long admired and who I never dreamed would have the fire in her veins to be assertive for women. I was wrong! In her own quiet way she has been one of the most active supporters of women and for women - never abrasive, never contentious, never self-absorbed and never critical of anyone. In her own quiet way she has been a major force in actualizing women's equity. Through observing her, I have learned that gentle manners and kindness in a very quiet way can really accomplish miracles. I could name many but I'm particularly referring to Suzy McLain.

## Athena "Housekeeping"

Mark your calendar for 5 p.m., Monday, September 12: special meeting to consider and vote on bylaw changes. Meeting will be held at the Tampa Bay Performing Arts Center's Off Center Theatre. Though RSVP's are not required, we'd like an idea of how many will attend (to plan seating and refreshments), so a call to Eleanor Hubbard (251-9172) would be appreciated. The meeting will begin at 5 and run until the business has been completed or a motion to adjourn is accepted. You'll receive a special mailing within the next few days with all the essential information, including a proxy for those unable to attend.

Enclosed is a copy of the inside panels of the Athena brochure which is being updated and revised. Please check your entry and notify us if your title or category should be changed. Call Eleanor Hubbard (251-9172) or fax (254-5585) by September 2. If we don't hear from you, your entry will be printed as shown.

Don't forget to bring your donation of sample-size toiletries for The Spring. We'll be collecting at both September meetings.

Members are invited to attend the 11th Annual Executive Woman of the Year luncheon on Friday, September 30, at the Wyndham Harbour Island Hotel. Though finalists have not yet been announced, the group usually includes a number of Athena members. (Last year's winner was **Laura Waller**.) If you'd like to sit at Athena's table, mail your check for \$24 - payable to EWOTY - to **Gayla Russell**, 35 Davis Boulevard, Tampa, 33606 prior to September 20.



## President's Corner

It was fabulous - absolutely fabulous! The Musical Theater Project which Athena members attended in lieu of our monthly membership meeting in July was beyond all expectation. A group of very talented kids performed with grace and style and reminded all of us to care for each other. We should all thank Annie Reinking, Debra McWaters, **Susan Grady** and **Gwynne Young** for their commitment to this project. A fund raising concert for the Musical Theatre Project of Tampa will feature Gregory Hines in concert September 9 at 8 p.m. at the Tampa Bay Performing Arts Center in Festival Hall. The proceeds will benefit the scholarship fund of the project. We hope all of you will attend and support this worthwhile project.

The Public Issues Committee under the leadership of **Linda Goldstein** highlighted Athena members running for political office at an open forum on August 4. We heard from **Adelaide Few**, **Dottie Berger**, **Paddy Moses**, **Sandra Wilson** and **Candy Olson**. Hopefully, this will be the first of many such forums to be held each election year. Please vote.

The Board of Directors at their meeting in July approved Athena's membership in The International Alliance, an association of executive and professional women. Our network membership allows Athena to have a representative at the annual membership meeting. As a result of the payment of dues, all Athena members will receive bimonthly news letters, annual directories and annual commerce brochures. The International Alliance (TIA) was founded in 1980 by leaders of professional executive women's networks from all over the United States. First known as The National Alliance, it changed its name in 1986 to reflect the interest in increasing number of members worldwide. The organization acts as a central forum for communication and action among members. It serves as a resource to unite women in the corporate, public and civic sectors. It gives voice and visibility to its members. Today The International Alliance has a membership of more than 5,500 women worldwide. Some are members of the 18 networks that have joined the alliance. Others are individual members known as Alliance Associates. The International Alliance is a non-profit 501(c)3 corporation. Please note the enclosure stating its mission, goals and other benefits.

Marny Needle, President of TIA, will join us at our November membership luncheon. Marny is Senior Vice President of NationsBank in Maryland. I know all of you will want to welcome her.

Athena is continuing to move forward to provide its members with an opportunity to be informed and participate as our busy schedules allow us an opportunity to do so.



## Young Women of Promise by Lee Blanton, Chair

The many Young Women of Promise committee members who contributed so much of their valuable time to make the program a success once again this year deserve a hearty thank you from us all. The Honorable **Katherine Essrig**, The Honorable **Marva Crenshaw**, **Carmen Bolt**, **Lee Leavengood** and **Rhonda Trainor** faithfully read and evaluated each of the 25 nomination forms which contained 7 to 12 pages each, varying primarily by the number of letters of recommendation. After reviewing and evaluating each nomination form, they took time to meet and carefully discuss each one.

As many of you will remember, the nomination form we now use was created last year by **Joan Zinober** with the assistance of other committee members including **Katherine**, **Marva**, **Rhonda**, **Binnie Coppersmith**, **Mary Lou Harkness** and **Elaine Shimberg**. One of the many great suggestions incorporated into the form was that the nominees write two essays. Those essays have given us heartwarming insight into the young women's goals and aspirations. Joan updated and revised the form for 1994, and once again the committee found it to be a very effective evaluation tool.

Further, we owe **Carmen** many thanks for arranging for such great newspaper coverage. For those who missed the **Steve Otto** column, the **Judy Hill** column and/or the picture of the YWP with The Honorable **Sandy Freedman**, please feel free to call me and I will be happy to send copies to you. Surely this was the best media coverage **Athena** received all year. Mayor **Freedman** delayed her trip to her daughter's graduation and endured considerable discomfort from recent knee surgery in

## Committee Report

order to participate in the YWP program again this year. Meeting the Mayor is one of the highlights for the YWP, and all present noted and greatly appreciated the individual and very genuine attention **Sandy** graciously extended to each of the young women.

**Terry Cone** generously stepped up this year to write and produce the outstanding program with the wonderful biographical sketches of each of the YWP. The sketches inspired us and served as background for the press coverage. Moreover, the printed program is a wonderful keepsake for the YWP. I understand that thanks and most of the production credits are due to **Terry's** husband and very capable assistant, **Tom Cone**. The high standard for the quality of the program was set years ago by **Sandy Frye** who was unable to work on the program this year but faithfully served in that capacity for many years.

The committee is very enthusiastic about several ideas we are considering for increasing **Athena's** involvement with the young women and for instituting a means by which we can follow up with the scores of young women chosen over the past 12 - 13 years. Just imagine the interesting paths their lives have taken.

In addition, after the meeting this year many members shared terrific ideas for future YWP programs. In response to those suggestions and at the request of some of the committee members, we will gather informally once more over the summer to review all those ideas and to decide how best to pass the torch to the committee members who will serve next year.

*Please note: This report did not run due to limited space for the last few months. We appreciate the Committee's patience.*

## Surprise Slated for Platt

**Athena** members are invited to help celebrate the accomplishments of **Jan Platt** at a luncheon to be held on Monday, October 10, at the **Wyndham Harbour Island Hotel**. This SURPRISE affair will be a very public opportunity to pay tribute to **Jan's** achievements as a **Hillsborough County Commissioner** (since 1978), to her four prior years on **City Council** and to her many other contributions to the **Tampa Bay Area**. If you'd like to sit at an **Athena** table, please mail your check - payable to **Athena** - to **Eleanor Hubbard** at the P.O. Box prior to September 28. Remember: the organizers of this function (**Tampa Bay Regional Planning Council**) are attempting to really surprise **Jan**, so please don't let it slip!



# Athena Society



B R I E F I N G S

August 1994

## 1994-95 OFFICERS AND BOARD

PRESIDENT ..... MIRIAM MASON  
PRESIDENT-ELECT ..... RUTH HIMES  
VP/MEMBERSHIP ..... SUSAN McLAIN  
VP/PROGRAM ..... ANN ROSS  
SECRETARY ..... ANNE KANTOR  
TREASURER ..... JUDY MUNSON  
IMM. PAST PRESIDENT... SUSANNA GRADY

### BOARD

DEIDRE BIBBY  
ELAINE COLLEGE  
NANCY FORD  
ALENE MAHIN  
MARGARET MATHEWS  
MIRIAM STAMPS

### MEMBERSHIP COMMITTEE

AMELIA BISHOP  
NONI BRILL  
GABRIELE FAULKNER  
PAM JORDAN  
ELLEN KIMMEL  
WILMA SMITH  
ALTERNATE: ANN OLSON

ADMINISTRATOR  
ELEANOR HUBBARD  
251-9172

**ATHENA SOCIETY**  
P.O. Box 10813  
TAMPA, FLORIDA 33679

## Upcoming Meeting

**WHEN:** Thursday, August 4, 1994  
5:30 - 7:30 p.m.

**WHERE:** WEDU-TV Studios  
1300 No. Boulevard

**WHAT:** "Hear OUR Candidates"

**RSVP:** By August 2 to Eleanor Hubbard (251-9172).

For the first time ever, Athena is having a special meeting to "Hear OUR Candidates" who are running for public office this fall. Because some key races will be decided at the September 8 Primary, we are scheduling our meeting for August 4 to give the candidates a chance to tell us why they're running - and how we can help them.

This is our chance to show them we do care and do want to hear what they have to say. We'll have a panel of Athena Society members to question them, and we're looking for questions from you - our members!

We also want you to invite as many guests as you can - at no charge! - to give them an opportunity to meet our candidates. We know it's summer - and some of you will be on vacation - but if you're in town, we're counting on you to be there - with lots of guests.

There will be limited refreshments - but limitless enlightenment from our Athena candidates for office!

## Donate Those Hotel Toiletries

If you're a fairly frequent traveller, you probably have a collection of sample-size toiletries...or maybe you don't even pick them up? If not, please do and, at the request of Mayor **Sandy Freedman**, donate them to The Spring. Bring soaps, shampoo, lotions, etc. to any Athena function and we'll have a collection bag at the registration desk; **Noni Brill** has offered to handle delivery. Incidentally, also needed at The Spring are huggers, rockers and friends. For more information, call 247-5433, ext. 326.



## President's Corner

Thanks to the careful planning of **Carolyn Reed**, our retreat at the Sanibel Harbour Resort and Spa provided 47 of us a needed respite and opportunity to draw closer. We listened to our Athena candidates talk about the health of our community; **Dorry Norris** led us in a discussion about our personal health and **Ellen Kimmel** focused us on the health of our organization. The pampering at Sanibel Harbour Resort and Spa was wonderful: We had pedicures, manicures, facials, massages, scrubs and other delicacies.

Desiring to maintain their anonymity, The Goddesses made their first public appearance at the local country western/karaoke bar. Spearheaded by that ever-creative **Louise Thompson**, **Stephanie Farrell** performed "April Love"; **Helen Gordon Davis**, also known as Helen Gordon Cortez, Louise Thompson, and **Joan Zinober** sang "New York, New York"; **Katie Brown** (also known as the girl with the most moves), along with **Anne Kantor**, performed Frank Sinatra's "My Way"; the trio of **Barbara Koenig**, Louise Thompson and Anne Kantor dedicated "I Am Woman" to **Velma Thomas**, who danced for everyone; everyone voted **Linda Wilson's** performance the most truly beautiful (but no one recognized the country western song she sang); and to top off the evening, **Mary Lou Harkness** and Katie Brown sang "Amazing Grace." The Goddesses are scheduled to perform for us in private concert at our holiday dinner in December. All are invited.

Each of us filled out a card which stated the year we became a member and what we expected to receive from Athena when we joined. Those expectations were very revealing and showed an evolution from Athena's conception to the current date. Some representative answers are the following:

- 1976 To meet and promote interests/welfare of business and professional women. Help promote equ rights for women. I joined Athena for purely idealist purposes. I felt Athena could be instrumental in effecting enormous positive changes for women.  
Nutrients. Strong women united for feminist agenda. Support for each other.
- 1979 Female friendship.  
Power. A wider circle of friends. Inspiration to do better.
- 1981 Friendship.  
Opportunity to meet women involved in other professions and other activities. Opportunity to spend time with women whose interests, ambitions were similar to my own and forge new friendships. Probably totally self-centered.
- 1985 I was looking for friendship and support of women interested in helping other women.
- 1987 Camaraderie with like-minded women, with interesting people.
- 1989 Membership in Athena gave me the opportunity to associate with and benefit from a group of women who shared professional focus and commitment but in most other ways brought great diversity to my circle of friends. Through Athena, I wanted the opportunity to make contacts and develop lasting relationships with women I would otherwise probably not meet.
- 1990 Establish relationships (business, personal) with achieving, interesting women.
- 1992 Friendship with professional, creative women. Support group/discussion group.  
A need for contact with women professionals. I felt so isolated in my workplace - definitely a male-



dominated field - that I was grateful to find support and caring in Athena. I look forward to being with members where I truly feel I can express my long-repressed self. Thank you!  
To care for and support each other as we all travel along our chosen paths to making a difference. To learn from and teach each other - to better equip myself and others to play our unique roles in life. Friends and contacts with female leaders who support and enjoy one another; time to detach from the pressure and enjoy one another.

1993 I wanted to meet other women in challenging fields so that I could draw from their experience, knowledge and inspiration.  
I became involved with Athena as a result of a desire to interact socially and professionally with women. To lessen my professional isolation from women.

Additionally, we assumed that we had reached a time in the future when the goals and objectives of Athena (the equality of women in business and the professions) had been achieved and, therefore, there was no longer a need for Athena's existence. We then wrote Athena's epitaph. Some of those are as follows:

The goals of Athena achieved, it has been accomplished by caring deeply about one another and teaching others in our community to do the same.

Here lies Athena. She died, but her soul lives on - sisterhood, friendship, love.

Athena is more than the pursuit of equality. It is friendship and caring. It continues to live.

Here lies Athena. It was an organization which was caring, supportive, progressive; offering its members a safe haven which will be continued

on by those who remembered.

We built bridges, not walls. We saved love, not hate. Because of that, we made a difference.

We experienced great highs and great lows together, and it made us care more about each other and life in general.

Our weekend together was a thoughtful and caring experience. We missed all of you who were unable to attend.

## News About Members

Our deepest sympathy to **Terry Cone** and **Marsha Rydberg** both of whom recently lost their fathers. Our thoughts are with them.

Congratulations to **Sue Schler** and Ron Glickman on the birth of 10 lb. 1 oz. (!) Samuel Eli on May 31. Sue will return to her medical practice next week but in the meanwhile has been enjoying her time at home with Samuel and two-year-old Michelle.

Update on **Babs Titus**: Since March 26 she's been Mrs. Don Evans, honeymooned in the Pacific Northwest and upon returning moved into a brand new home in South Tampa with Don and chocolate lab puppy (Moonpie). She's doing well healthwise and looks forward to active participation in Athena this year. It will be great to have her back!



## "First Person" Stories from Retreat

*During group discussion on Sunday morning, members were asked to share an experience they'd had in Athena and describe how it had changed them. Below is a sampling of what was revealed. We'll run additional stories in future issues.*

My first blind date. I needed a ride to the Athena retreat. A friend fixed us up. It was love at first carpool. Riding three hours from Tampa in a car with my new friend, I experienced what I had hoped I would when I joined Athena. We talked about life experiences that had brought us to Christ. We talked about our spirituality. We talked about our children - our world children. We connected in a way that rarely presents itself in the busy work-a-day world. We understood without talking. We got lost without arguing. We asked directions without hesitation. We laughed. We cried. We smiled. We touched. We grew. It was a three-hour date. It was a lifetime. It was a generation of lifetimes. It was why I joined Athena.

My first meeting was the Yacht Club meeting. Earlier we were asked about our expectations in joining Athena. Mine was finding a group of like-minded women! As I watched that meeting unfold, I was alarmed at first. Should I agree or disagree? Should I take sides? In retrospect I realized this group was able to disagree (quite vocally) and yet not destroy the group in the process. It wasn't necessarily fun, but it has certainly provided us with memories. I'm glad I joined.

I felt like one of the "walking wounded" before I was invited to join Athena. I was in a totally male-dominated field where little progress was being made in the workplace to make women feel welcome and worthwhile. Even after the Anita Hill hearings and mandated sexual harassment training throughout our agency, it seemed to me to be a hopeless cause. The majority of the (what used to be blatant) hostile work atmosphere continued, only in a more subtle - almost "underground" - manner. "They" had just become more clever about their tactics. Even having achieved beyond my dreams in climbing the ranks and truly breaking the glass ceiling, I was on the verge of quitting... UNTIL ATHENA. All of you have given me sanctuary and a place where I feel welcome and have healed through the love, professional support and the caring strength of each of you I've come to know.

## Athena "Housekeeping"

The Board of Directors has approved adoption of Roberts Rules of Order as the governing procedure for both general membership and board meetings; President Miriam Mason has announced the appointment of Kathleen Grizzard as Athena's official parliamentarian. Board meetings will be held on the last Wednesday of the month at 4:30 p.m. at the Museum of African American Art, 1308 Marion Street. Any member is welcome to attend but is requested to notify Eleanor Hubbard in advance so that adequate seating may be prepared. (For the July 27 meeting, please call Eleanor by noon Tuesday.) Anyone who wishes to place an item on the agenda is requested to notify Miriam 10 days in advance so that it may be included in pre-meeting mailing.

Membership dues are due!

Mark your calendar for 5 p.m., Monday, September 12: special meeting to consider and vote on bylaw changes. Location and details will be announced in an upcoming mailing which will also include proxy information. In the meantime, don't forget the deadline of August 19 for receipt of proposed amendments; mail to Eleanor Hubbard at the P.O. box.

# Athena Society



B R I E F I N G S

July 1994

## 1994-95 OFFICERS AND BOARD

PRESIDENT ..... MIRIAM MASON  
PRESIDENT-ELECT ..... RUTH HIMES  
VP/MEMBERSHIP ..... SUSAN McLAIN  
VP/PROGRAM ..... ANN ROSS  
SECRETARY ..... ANNE KANTOR  
TREASURER ..... JUDY MUNSON  
IMM. PAST PRESIDENT... SUSANNA GRADY

### BOARD

DEIDRE BIBBY  
ELAINE COLLEGE  
NANCY FORD  
ALENE MAHIN  
MARGARET MATHEWS  
MIRIAM STAMPS

### MEMBERSHIP COMMITTEE

AMELIA BISHOP  
NONI BRILL  
GABRIELE FAULKNER  
PAM JORDAN  
ELLEN KIMMEL  
WILMA SMITH  
ALTERNATE: ANN OLSON

ADMINISTRATOR  
ELEANOR HUBBARD  
251-9172

**ATHENA SOCIETY**  
P.O. Box 10813  
TAMPA, FLORIDA 33679

No luncheon meeting in July. Members are encouraged to attend the retreat at the Sanibel Harbour Resort: July 8-10. (We've already got a record crowd of 54!) If you need a room, a roommate or transportation, call Eleanor Hubbard at 251-9172. This luxurious facility in a tranquil setting will be the backdrop for a wonderful weekend of relaxing, socializing, getting better acquainted with fellow members and participating in an excellent program. Registration checks (\$150) are due July 1.

## Upcoming Meeting

In lieu of an August meeting, we'll again attend a performance of the Musical Theatre Project of Tampa.

**WHEN:** Saturday, July 30, 1994  
7:30 p.m.

**WHERE:** The Playhouse  
Tampa Bay Performing Arts Center

**WHAT:** "Broadway '94"  
A musical revue with sketches

**COST:** Members - No charge  
Guests - \$20.00

**RSVP:** By July 20 with enclosed card or  
call Eleanor Hubbard (251-9172).

A block of tickets is being held for Athena and will be released after that date, so please respond promptly. Tickets will be distributed that evening at the door. Bring your family, bring your friends!

Those who have attended the past three years have been thrilled with the performances...the students are unbelievably talented. Ann Reinking is the Artistic Director and the students are being trained by some well known local talent plus nationally known stars.

This will be a memorable evening, so plan to be a part of it.



## President's Corner

In January of 1981, while living in Pensacola, I went snow-skiing in Europe with a Tampa ski group. It was on that trip that I met **Sandy Frye**. This was only my third ski trip (for those of you who don't ski, that means I wasn't very good), but I was determined to keep up with the guys and to carry my own skis as necessary. Near the end of that trip Sandy Frye told me there was an organization of professional women in Tampa that I would fit right in with. I am thrilled and amazed to now find myself president of the organization that she told me about.

I am convinced that Athena is a powerful "good-old-girls" network. Some will say we are not because we do not use the power that we have gathered. I am still convinced that we are powerful and it is as a result of not only our desire to achieve but the effort that each of us has been willing to commit to achieve. Athena's goal has always been the promotion of equality and opportunity for women. But how this year are we going to achieve that? It is my goal that we focus our efforts to achieve the specific goal that we select. I am hopeful that we will make that choice at our retreat in Sanibel in July.

I have been lucky to experience firsthand the presidencies of **Moira Burke, Juel Smith and Susan Grady**. I will continue what I saw to be their practice - to be totally inclusive. Please tell me your thoughts, interests and concerns and I will take those to the Board and to the membership as necessary and as appropriate. It is important to me that the administrative aspects of Athena run smoothly this year so that we can spend our efforts achieving the goals that we have determined are appropriate and important to us.

## Special Meeting: Hear OUR Candidates

As election season approaches, several members of the Athena society are running for office. Since the September 8 Primary will be the deciding election for some offices, the Public Issues Committee is sponsoring a special "Hear OUR Candidates" Forum to give members who are candidates the opportunity to tell us why they are running in their respective races. Therefore, we are having a special meeting

**WHEN:** Thursday, August 4 5:30 p.m.

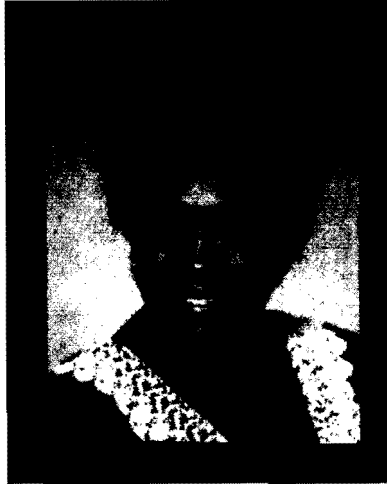
**WHERE:** WEDU-TV Studios 1300 No. Boulevard

expressly for this purpose. There will be light refreshments -and weighty information! Because we want to have as many people in attendance as possible, we encourage everyone to invite guests; at no charge. We urge all members to attend this meeting to show our candidates that we care and want to hear what they have to say. It's not easy to run for office, and we salute those who have stepped forward. The best way to demonstrate that support is to come to the August 4 meeting - and invite plenty of guests!

RSVP: By August 1 to Eleanor Hubbard (251-9172).



## In Memoriam



**Sylvia Rodriguez Kimbell**

April 7, 1934 - June 2, 1994

## Committee Report

### **Operation Jumpstart** *by Louise Thompson*

An enormous success, the April 23 Operation Jumpstart seminar at the Tampa Library was attended by a dozen members and 40-plus women from the community. Athena members **Phyllis Busansky, Paddy Moses, Gayla Russell and Louise Thompson** plus CareerTeam's Janet Conner and image consultant Jackie Walker served as panelists; Elaine College emceed; the Community Action committee handled set-up, registration and hostess tasks. Both our president and president-elect attended.

Speakers presented valuable tips and inspirational anecdotes on topics such as resume preparation, temporary employment, career search management, financial planning, personal marketing, power networking, professional dress and image. Attendees later gathered into sub-groups and, with help from the panelists, found encouragement, support, direction and new resources to tap.

Attendees signed up for specific mentoring from Athena members, so expect a call from a committee member asking for your help. Don't

forget, helping these women can earn you good feelings AND an official Athena Jumpstart Frog Pin.

**Elaine College** presented a frog pin to each of the panelists for their hard work. One attendee described the effort this way: "What a wonderful thing to do and certainly not something we see done every day. Women reaching back to help other women! I can't tell you how good the seminar made me feel, how much I appreciate your organization for putting it on and what super help I got from attending. Thank you Athena."

Congratulations to all who participated in the event and thank you for giving up your Saturday for such a worthwhile endeavor. We plan on making it an annual event. So, stay tuned in for how you can be a part of the next one.



*By Ruth Himes,  
Chair, Bylaws Committee*

## Proposed Amendments to the Bylaws

At the June membership meeting, the members present voted on proposed bylaw amendments which had been previously mailed to the membership. At the meeting a substitute amendment was proposed relating to the nominating committee. This amendment was not mailed to the membership prior to the meeting. The proposed bylaw amendments, as amended by the substitute amendment, were approved by those present at the June meeting.

There was significant discussion at the meeting about whether procedurally we could vote on a substitute amendment that had not been mailed out to the membership prior to the meeting. I therefore requested corporate counsel, not a member of Athena, to review the Articles of Incorporation and the Bylaws of Athena to determine whether the action taken at the June meeting was in accordance with those Articles and Bylaws and was effective. After review of the Articles, Bylaws and proposed amendments, counsel advised that the Articles of

Incorporation specifically provides that the amendment or amendments must be mailed to the membership 10 days prior to the

meeting at which a vote is to be taken. Thus, the action at the June meeting was not effective.

The Board of Directors has determined to call a special meeting of the membership for the purpose of considering and voting on bylaw amendments for September 12 at 5 p.m. The location of the meeting will be noticed in the next edition of this newsletter. The bylaws with the amendments that were approved at the June meeting will be mailed to the membership in accordance with the Articles and Bylaws. Anyone who wants to propose an alternative amendment or amendments must have the proposed amendment to Eleanor Hubbard no later than August 19 at 5 p.m. so that it may be included in the mailing for the September meeting. This mailing will also contain the procedure for voting by proxy.

If you have any questions, please do not hesitate to call me at 223-7000.

## Athena "Housekeeping"

Request for directory page updates have just gone out; due prior to July 6 with photo deadline of July 25. If you don't have a photo on your page, PLEASE consider having one taken.

If you've not returned your committee preference card, please do so...it's not too late. Your participation is needed!

Absolute last call for Athena pin or pendant requests...until summer of 1995. If you'd like to order, send your check - made out to Doug Rubottom - to Eleanor Hubbard at the P.O. box by July 1. Prices are as follows: 14' yellow gold - \$95.32; sterling silver - \$28.22; vermeil - \$29.82.



# Athena Society



B R I E F I N G S

June 1994

## Upcoming Meeting

**WHEN:** Wednesday, June 8, 1994  
5:30 p.m. - Cocktails  
6:15 p.m. - Dinner

**WHERE:** Centre Club  
Top of One Urban Centre  
Kennedy at Westshore

**PROGRAM:** Business Meeting - Agenda to include:  
Bylaws - voting  
Election of Officers/Directors  
Installation  
Celebration of Member's Achievements

**RSVP:** By June 3 with enclosed card or  
call Eleanor Hubbard (251-9172).

### CLOSED MEETING • NO GUESTS

Because no new members were inducted this year, the annual party to honor them (usually held in June) will not take place. Instead, the installation dinner will be a bit more festive and the focus will be on the achievements of our members during the **past year**. In that vein, members are encouraged to mail to Eleanor Hubbard - by June 3 - a brief description of the special accomplishment to be highlighted. (Feel free to mail in your own such information.)

### 1993-94 OFFICERS AND BOARD

PRESIDENT ..... SUSANNA GRADY  
PRESIDENT-ELECT ..... MIRIAM MASON  
VP/MEMBERSHIP ..... MIRIAM STAMPS  
VP/PROGRAMS.. PATTI BRECKENRIDGE  
SECRETARY ..... PADDY MOSES  
TREASURER ..... GAYLA RUSSELL  
IMM. PAST PRESIDENT ..... JUEL SMITH

#### BOARD

ELAINE COLLEGE  
ALENE MAHIN  
MARGARET MATHEWS  
GAY CULVERHOUSE  
PAMELA JORDAN  
DELIA SANCHEZ

#### MEMBERSHIP COMMITTEE

NONI BRILL  
ELLEN KIMMEL  
WILMA SMITH  
LEE BLANTON  
SUSAN BUCKLEW  
SUSAN McLAIN  
ALTERNATE: DEANNE ROBERTS

ADMINISTRATOR  
ELEANOR HUBBARD  
251-9172

**ATHENA SOCIETY**  
P.O. Box 10813  
TAMPA, FLORIDA 33679





## 1994-95 Slate

The following slate has been proposed for 1994-95 by the Nominating Committee:

<b>President</b>	Miriam Mason
<b>President-Elect</b>	Ruth Himes
<b>VP/Membership</b>	Suzy McLain
<b>VP/Programs</b>	Ann Ross
<b>Secretary</b>	Anne Kantor
<b>Treasurer</b>	Judy Munson
<b>Imm. Past Pres.</b>	Susan Grady

### BOARD MEMBERS

#### *For 2-year term:*

Deidre Bibby  
Nancy Ford  
Mimi Stamps

#### *Returning:*

Elaine College  
Alene Mahin  
Margaret Mathews

### MEMBERSHIP COMMITTEE

#### *For 2-year term:*

Amelia Bishop  
Gabriele Faulkner  
Pam Jordan

#### *Returning:*

Noni Brill  
Ellen Kimmel  
Wilma Smith

Alternate: Ann Olson

The Nominating Committee was comprised of Chair Juel Smith, Margaret Mathews (board representative), Anne Kantor (member at large), Sandy Frye and Phyllis Marshall (past presidents), Carolyn Reed and Wilma Smith (alternates), Susan Grady and Miriam Mason (ex officio).

## President's Corner

As I sit and write my last article for the newsletter as President of this society, I cannot help reflecting back over the year. Many events and fine programs have transpired. The society has become more active politically although for some of our members Athena has become too political while others feel that Athena has not even begun to address the issues. I suspect that the reality is somewhere in between and must ultimately be measured against that which we will be able to do and do well and that which we desire to do. We cannot do it all as a society and must rely on our individual members to do what they can individually. Certainly our members have accomplished a great deal this year. The Political Issues Committee, under the able leadership of **Barbara Romano**, has developed several major position papers and is currently developing implementation suggestions. The Community Action Committee, led by **Laura Waller**, held a Saturday morning program for women within our community who are re-entering the work force or simply experiencing a career shift. It was truly an outstanding program and the group will continue to meet. Needless to say, **Patti Breckenridge's** Program Committee did an outstanding job throughout the year.

**Mimi Stamps** and **Suzy McLain** completed a thorough review of the membership process and explored many of the issues that have been raised over the past few years. **Juel Smith** and her committee explored the issues raised by our election process and have done a fine job in presenting an outstanding slate for next year. The board has dealt with numerous issues and has tried to lead the society with sensitivity and clarity. We have carefully budgeted for next year and have been able to hold the dues at the 1993-94 level.

I look forward to another terrific year for the society under Miriam's careful and thoughtful leadership. Her year begins with the annual meeting and then the retreat. It has been a pleasure to have served as the society's president, and I thank each member for allowing me the opportunity to do so.



## News About Members

**Elaine College** and **Susan Bucklew** were honored last month as "Women of Distinction" by Soroptimist International of Tampa - Elaine for achievement in business and Susan for achievement in government.

Our sympathy to **Mary Lou Harkness** upon the recent death of her father. In March Mary Lou had the pleasure of returning to Nebraska for the celebration of his 100th birthday.

To let **Sylvia Kimbell** know that she is in your thoughts and prayers during a most difficult time, you may wish to send her a note at her home: 9732 Belvedere Drive, Seffner 33584. We want Sylvia to know we're sending positive vibrations her way and our best wishes for a speedy recovery.

## Athena "Housekeeping"

Reminder: Ballots for proposed position statements on pay equity and women in government should be mailed in by June 8 or brought to the dinner. You'll receive material on proposed bylaw changes within next several days; voting will take place at the dinner.

Attention retreat attendees: Please make your room reservations at the Sanibel Harbour Resort by **June 9**. Our block of rooms will be released after that date which means that you might have trouble finding space. (We've been told that July is a popular month for Florida residents and usually completely booked.) Checks for \$150 registration may be made payable to Athena and mailed to the P.O. box prior to July 1.

An enthusiastic "thank you" to Dottie Berger and Two Rivers Ranch for the wonderful outing/BBQ on April 30! A congenial crowd gathered in unbelievably serene surroundings for good conversation, good food and an opportunity to see wide open spaces - nature at its best - that many thought no longer existed in this area. The ranch staff was extremely hospitable, and all who attended had a great afternoon.

A number of members who didn't get Athena jewelry last year have now indicated an interest, so we're attempting to work up the minimum order of 20 pieces. Prices are as follows for either pins or pendants: 14K yellow gold - \$95.32; sterling silver - \$28.22; vermeil - \$29.82. If you're interested, please send your check - made out to Doug Rubottom - to Eleanor Hubbard at the P.O. box by July 1.

It's time to sign up for committees for 1994-95. Please indicate your preference on the enclosed card and return by June 15. Committees are Community Action, Hospitality, Long Range Planning, Public Issues, Public Relations, Seminar and Young Women of Promise.

Your Athena summer calendar looks like this:

June 8: Installation dinner  
July 8-10: Retreat  
July 30: Musical Theatre program (evening)

There will be no luncheon/dinner meetings in July or August.



## Committee Reports

### Public Issues

by Barbara Romano, Chair

The Public Issues Committee has developed over the last two years and during this time the Athena membership has approved five position statements: choice, educational funding, day care, tolerance (diversity) and non-violence. Two others, pay equity and women in government, are currently being voted upon.

Many action steps have been taken this year to support these positions including letters to Congressmen and others encouraging appointment of candidates who support our positions. In addition programs have been presented at Athena meetings explaining these positions and rewarding those who have made exceptional progress in furthering these issues. Other action has been to involve the media by inviting them to our meetings to hear and report on these issues. In one case a financial contribution was made to The National Conference for its program promoting diversity.

There are many other action steps on the drawing boards (too numerous to mention here but available to anyone who would like to see them) that Athena members can use as individuals or as an organization

to further our causes. Next year's committee will prioritize and act on those. In accessing those action

steps, it will be especially important to coordinate efforts of Public Issues, Community Action, Program and PR committees.

Arising from this year's information was one possible project that all committees might embrace. It was evident from the program presented in April on pay equity that the Broward County Commission on the Status of Women has been extremely successful in convincing that county to evaluate its pay equity. It is possible that Athena might be the catalyst for reinstating a local commission to improve the status of women. Hold that thought for the retreat!

A priority for next year should be to better define and develop a process for acting on our positions in a timely fashion - a "hot line" to immediately alert members on crisis issues of concern; an "editorial board" of our own to respond to the media and assist members with writing their own letters to the editor; a better defined plan to act upon our very purpose and objectives, improving the status of women and promoting equality and opportunity for women as defined in our bylaws and articles of incorporation.

### Next Month:

Two extremely successful recent committee functions - Operation Jumpstart and Young Women of Promise - will be recounted in the July *Briefings*. Lack of space prevents us from publishing a full report in this issue.

# Athena Society



B R I E F I N G S

May 1994

## 1993-94 OFFICERS AND BOARD

PRESIDENT ..... SUSANNA GRADY  
PRESIDENT-ELECT ..... MIRIAM MASON  
VP/MEMBERSHIP ..... MIRIAM STAMPS  
VP/PROGRAMS .. PATTI BRECKENRIDGE  
SECRETARY ..... PADDY MOSES  
TREASURER ..... GAYLA RUSSELL  
IMM. PAST PRESIDENT ..... JUEL SMITH

### BOARD

ELAINE COLLEGE  
ALINE MAHIN  
MARGARET MATHEWS  
GAY CUIVERHOUSE  
PAMELA JORDAN  
DELIA SANCHEZ

### MEMBERSHIP COMMITTEE

NONI BRILL  
ELLEN KIMMEL  
WILMA SMITH  
LEE BLANTON  
SUSAN BUCKLEW  
SUSAN McLAIN  
ALTERNATE: DEANNE ROBERTS

ADMINISTRATOR  
ELEANOR HUBBARD  
251-9172

## ATHENA SOCIETY

P.O. Box 10813  
TAMPA, FLORIDA 33679

## Upcoming Meeting

- WHEN:** Thursday, May 5, 1994  
11:55 a.m. - lunch
- WHERE:** Hyatt Regency Tampa  
211 No. Tampa Street
- PROGRAM:** 1994 Young Women of Promise
- COST:** Guests - \$20
- RSVP:** By May 2 with enclosed card or call Eleanor Hubbard (251-9172). If you don't think your card will arrive by MONDAY, please call.

### OPEN MEETING • GUESTS WELCOME

Again this year the committee has opted to have no speaker and instead devote the entire program to highlighting the accomplishments of the honorees. Fourteen outstanding young women have been selected; see page 4 for a complete list.

Presentation of the plaques will be by Mayor **Sandy Freedman**.

This is always a "feel good" meeting because these young ladies represent everything that is positive about teens today. You'll be inspired and impressed by their accomplishments. Join us to meet them and show your support.

Two requests:

- 1) This is always a well-attended meeting, so please reserve early...or at least on time: by May 2.
- 2) Try to arrive early. Parking in Fort Brooke can be a challenge if there are several downtown functions; early will assure you a spot.



## President's Corner

The Nominating Committee has completed much of its work and the results are most promising. By now you should have received your nomination packet, and you'll note that what was previously called the "straw ballot" has been changed to a nomination form. Attached to the nomination form you will find an explanation of the new makeup of the Nominating Committee which has been approved by your Board. Using your nominations, the Committee will put together a slate of officers for next year which will be presented at the annual meeting in June.

The recommendations of the Membership Committee will be presented in their entirety to the Board at its next meeting and a formal report will be available shortly thereafter. These committees have spent many hours deliberating and have endeavored to involve all the members in the decision-making process. Like other institutions, we are evolving and are always trying to improve ourselves as a group. What is appropriate action today may be inappropriate two to five years from now and may

need to be revisited in the future and changed.

I have recently received a letter of resignation from the Board from Gay Culverhouse. She is very sorry that her schedule and that of the Board's have been such that she has not had the time to devote to the Board's work. Since her term ends officially in June, I have decided to wait until the Nominating Committee comes forth with the slate to replace Gay. We are sorry that she has not been able to be at many of the meetings because she has so many good ideas, and her perspective within the community is essential to what we are doing within our society.

On a different note, you will be pleased to know that the Board is working diligently to try to contain all costs and to present a balanced budget for 1994-95 without having to raise our dues. Again more information will be forthcoming following the next Board meeting.

Happy May 1st. May each of you find a beautiful maypole around which to dance.

## Classified Ads

**Adelaide Few** has announced her candidacy for Circuit Judge, Group 12, a circuit/countywide non-partisan position. The seat is being vacated by the retirement of Roland Gonzalez. Adelaide notes that all support is welcome and appreciated and anyone interested in actively helping is encouraged to call her at 837-8667.

**Nancy McDonald** has switched from computers to the personal development arena with a unique self-esteem review. Her new company publishes ESTEEM, a monthly multi-media dose of educational and motivational material. In addition to audio tapes, there's a full color magazine with articles to help build self-esteem and balance your life. To contribute and/or subscribe, call Nancy at 289-0550.



## News About Members

**Jean Amuso** received the "Adjunct Faculty of the Year" award from the USF Social Work Alumni Society. This award was voted on by students for faculty's teaching and dedication to students.

For her work as Project Architect on the Tampa Linear Park project, **Stephanie Ferrell**, AIA, was recently presented with an achievement award by The Planning Commission at their 12th annual Community Awards Dinner. Established to recognize excellence in planning, landscape architecture, environmental sensitivity and architectural design in projects within Hillsborough County, the Planning Commission presented an Award of Recognition to the Historic Tampa/Hillsborough County Preservation Board for the project and to Stephanie individually as the architect.

**Jan Abell** has been elected a Fellow of the American Institute of Architects (AIA), the highest honor bestowed upon one of its members by the professional association. Jan's admission to the AIA's distinguished College of Fellows is in recognition of her "notable contributions to the advancement of architecture" in the category of "design, urban design and preservation." She will be formally honored in ceremonies at the AIA convention in Los Angeles on May 14.

Each year the Florida Education and Employment Council for Women and Girls sponsors an Awards Program to recognize organizations, school districts, community colleges and individuals who have supported equity in education. **Rhonda Trainor** was the recipient of this year's award for outstanding leadership in support of women and girls in vocational education. The award was presented last month in Orlando.

**Dore Beach** has been selected to be included in the 19th edition of Who's Who of Women in America. She has also recently become an associate member of the Hastings Center which is a "think tank" that attempts to resolve the moral problems brought on by advances in the biomedical sciences and educates the general public on the ethical aspects of scientific, medical and professional issues and dilemmas that will inevitably change our own lives and those of our children, such as: care of the dying, animal welfare, resource allocation, genetic screening and justice in health care and environmental ethics.

Congratulations to Tom and **Susan Freeman** on the March 22nd birth of Jonathan Spencer Freeman. Big brothers Daniel (5) and Andrew (2) are thrilled with the new addition.

**Sylvia Richardson** was honored by The Florida Branch of the Orton Dyslexia Society in their establishment of the Sylvia O. Richardson, M.D. Annual Award which shall be awarded to an individual who has had a profound impact on the lives of dyslexic or learning disabled individuals.



## 1994 Young Women of Promise

Continued from Page 1

Amy Alspach .....	Leto High School
Andrea Brobeil .....	Hillsborough High School
Lacy Garno .....	Gaither High School
Kristin Gillis .....	Berkeley Preparatory School
Nancy Hernandez .....	Bloomington High School
Caroline Humphrey .....	Plant City High School
Rizwana Khan .....	Plant City High School
Amy Mikolajczyk .....	Leto High School
Amanda Mills .....	Hillsborough High School
Tran Nguyen .....	East Bay High School
Shannon O'Leary .....	Brandon High School
Silvana Smud .....	Armwood High School
Cindy Sobel .....	Tampa Preparatory School
Kelly Stout .....	Tampa Preparatory School

## Athena Housekeeping

Don't forget to make reservations for the Athena Plus Western BBQ being held Saturday, April 30, at Two Rivers Ranch. It's a family affair, so bring your spouse, your kids, your parents - anyone who enjoys the great outdoors and good food. For reservations, call Eleanor Hubbard (251-9172) by Tuesday. Don't miss it!

June 8 - Dinner meeting at Centre Club: Installation of new board

July 8-10 - Retreat at Sanibel Harbour Resort & Spa; charter bus driving the first 47 members who reserve; details soon.

"The Search for Signs of Intelligent Life in the Universe" will be presented by Stageworks next month, and a block of tickets has been reserved for Athena members. Widely acclaimed, "Search" won a New York Drama Desk Award, The New York Drama Critics Circle Award and a Tony for Best Actress Lily Tomlin. Tickets are for Thursday evening, May 19, 8 p.m. at the Falk Theatre. If you'd like to attend, make your reservation prior to May 14 by leaving a message on **Louise Thompson's** voice mail: 287-8955. Check for \$12 - payable to Athena - should be mailed to Eleanor Hubbard at P.O. Box 10813, Tampa 33679. Guests, of course, are welcome. The play examines a world focused on the drive for power but is also a hilarious running critique of America's social fabric. A New York Times critic called it "the most genuinely subversive comedy to be produced on Broadway in years."



# Athena Society



B R I E F I N G S

April 1994

## 1993-94 OFFICERS AND BOARD

PRESIDENT ..... SUSANNA GRADY  
PRESIDENT-ELECT ..... MIRIAM MASON  
VP/MEMBERSHIP ..... MIRIAM STAMPS  
VP/PROGRAMS .. PATTI BRECKENRIDGE  
SECRETARY ..... PADDY MOSES  
TREASURER ..... GAYLA RUSSELL  
IMM. PAST PRESIDENT ..... JUEL SMITH

### BOARD

ELAINE COLLEGE  
ALENE MAHIN  
MARGARET MATHIEWS  
GAY CUTVERHOUSE  
PAMELA JORDAN  
DELIA SANCHEZ

### MEMBERSHIP COMMITTEE

NONI BRILL  
ELLEN KIMMEL  
WILMA SMITH  
LEE BLANTON  
SUSAN BUCKLEW  
SUSAN McLAIN  
ALTERNATE: DEANNE ROBERTS

ADMINISTRATOR  
ELEANOR HUBBARD  
251-9172

**ATHENA SOCIETY**  
P.O. Box 10813  
TAMPA, FLORIDA 33679

## Upcoming Meeting

- WHEN:** Thursday, April 7, 1994  
11:55 a.m. - lunch
- WHERE:** Centre Club  
Top of One Urban Centre  
Kennedy at Westshore
- PROGRAM:** Pay Equity: It's on the Level!
- SPEAKERS:** Helen Gordon Davis  
Sherril Claus, AT&T Paradyne  
Karen Hosto, Broward County  
Herbert Seymour, TECO Energy
- RSVP:** By April 4 with enclosed card or  
call Eleanor Hubbard (251-9172).

### OPEN MEETING • GUESTS WELCOME

Pay equity (comparable worth) for women and minorities has been "the most overriding human rights issue for the past twenty years," according to former State Senator Helen Gordon Davis who carried the banner for this vital issue during her legislative career.

Senator Davis is in charge of April's program, under the auspices of the Public Issues Committee, which will be devoted to this very important topic. She will give some background and an update on pay equity.

Also featured are representatives of three employers who have instituted pay equity in their organizations: Herb Seymour, Director of Compensation and Benefits for TECO Energy; Karen Hosto from the Broward County Task Force on the Status of Women; and Sherril Claus, Vice President of Human Resources for AT&T Paradyne. Mayor Sandy Freedman will present them with Athena "Level of Progress" Awards for their achievements.

In addition there will be a proposed position paper on pay equity (included in this mailing) for members to peruse and vote on at a later time.

Members are urged to invite guests.



## News About Members

**Elaine Fantle Shimberg** has been appointed to a five-year term on the Florida Medical Association's Council on Ethical and Judicial Affairs. She is the first lay person to serve on that council and was selected from nominations made by the county medical associations throughout the state. Elaine is presently writing a book on Tourette Syndrome for Simon & Schuster. It is the first book on this subject to be published by a major publishing house. Anyone with personal or professional dealings with TS is welcome to contact her as she is now conducting interviews for background material. All information will be kept confidential.

**Mary Lou Harkness** will serve as President and **Phyllis Marshall** as President Elect of the University of South Florida Women's Club for 1994/95.

**Patti Breckenridge** has been promoted to Assistant Managing Editor for Presentation at The Tampa Tribune, making her the #3 person in the 400-person news division.

President Clinton has appointed **Mayor Sandy Freedman** as one of thirty members of the Bipartisan Commission on Entitlement Reform. The President created the Commission by executive order and asked U.S. Senators Bob Kerrey and John Danforth to act as its co-chairs. The Commission is charged with recommending long-term budget savings proposals through entitlement reform and alternative tax reform proposals. It will report those recommendations to the National Economic Council later this year.

**Jackie Whatley** has been appointed to serve on the Florida Bar Real Estate Certification Committee. This committee is responsible for determining the qualifications of lawyers seeking to become certified as specialists in real property law.

**Ellen B. Kimmel** has been cited by the American Psychological Association's (APA) Committee on Women in Psychology as a "distinguished leader for women in psychology." In keeping with its goal of ensuring that women in psychology achieve equality as members of the psychological community, the committee each year confers Leadership Citations to individuals who have made outstanding leadership contributions to women in psychology. The citation for Ellen notes the "consistency, breadth and longevity of her work on behalf of women... She exemplifies the feminist vision of mentoring, leadership and organizational development, empowering women and minorities...and has provided courageous and effective leadership from the early days of the women's movement in psychology and sustained this leadership over two decades."

**Casey Shear** is the newly elected Chair of the Boys and Girls Club of Tampa Bay. Serving approximately 18,000 youngsters annually, the Club has an operating budget of nearly \$3 million, has 13 branch sites and four extension sites as well as an extensive outreach program. Casey is the first woman to chair the 68-year-old organization; **Nancy McDonald** serves on the Executive Board and is a Vice Chair.

**Jan Platt** has been selected to be included in the International Who's Who of Professional & Business Women. She has been a public servant for twenty years: four years as a member of the Tampa City Council and 16 as a Hillsborough County Commissioner.

**Joan Zinober** was recently appointed to the Leadership School Task Force of the American Bar Association. The purpose of the Task Force is to "enhance the practice of leadership within the profession."



## "Daughter's Day" Info Available

This year's "Take Our Daughters to Work Day" is April 28. The day is designed to encourage girls who traditionally have had fewer chances than their brothers to be exposed early to a wide array of career possibilities. For information packets to help companies or groups that want to participate, call the Ms. Foundation for Women at 800/436-1800.

## Classified Ad

In support of Athena's tolerance position, the Public Issues Committee urges you to attend the Annual Meeting of the Planned Parenthood Assn. of Southwest Florida on Thursday, April 7, 6 p.m. at the Hyatt on Sarasota Bay. "The Intolerance of the Religious Right" will be the keynote presentation. For additional information, call 813/365-3913.

## Public Issues Committee Alert

There is an urgent need to continue our support for Rosemary Barkett. As a follow up to the letters that Susan Grady has written on behalf of Athena to Senators Bob Graham and Connie Mack, we request that you as individuals do the same and also use what influence you might have on Senators Orin Hatch, Bob Dole and Strom Thurmond.

## Six Members Named "Women of Distinction"

Athena was prominently represented last week when the Suncoast Girl Scout Council honored 23 local "Women of Distinction" who have achieved success in their chosen field, made significant contributions to the community and who serve as good role models for girls.

Among those honored were **Sandra Freedman, Phyllis Marshall, Mary Scriven, Elaine Shimberg, Alex Sink** and **Juel Smith**. They will also act as mentors at an event in May to honor Senior Girl Scouts who have earned the Gold Award, the top recognition in scouting.

## Athena "Housekeeping"

An open forum on membership was held at Tampa Prep on March 7 with approximately 20 members attending. Comments expressed at that meeting have been taken back to the elected membership committee and the ad hoc membership committee which will make recommendations to the board at their April meeting. Changes will then be incorporated into the bylaws and policies and procedures manual.

---



# Building Named For Phyllis Marshall



Hundreds - including about 50 Athena members - attended ceremonies for the dedication of the Phyllis P. Marshall Building at USF on March 3. As dignitaries, friends and family looked on, Phyllis graciously accepted the honor of having the student union renamed for her. Accolades continued at the "roast" that followed as former staff members and students joined others in singing her praises. Phyllis, 1987-88 Athena president, will retire in June.

---

## Public Issues

*by Barbara Romano, Chair*

Public Issues Committee to date has written, and Athena has adopted, position statements on choice, education, tolerance, day care and violence.

Please review the proposed position on pay equity before the April 7 meeting where it will be discussed in conjunction with a program on that subject. It will be voted on at a later date. We have Helen, Louise Thompson, Linda Goldstein and Sandy Frye to thank for develop-

## Committee Reports

ing that program and the statement. We request that Athena members invite as guests to the April meeting CEO's who would profit from our program on pay equity.

The committee is also in the process of developing a statement on "Women in Government." Louise Thompson, at the request of the committee, has put all statements in the same format; they are enclosed. Soon we will ask for your input to develop more action steps for those statements.

---

# Athena Society



B R I E F I N G S

March 1994

## 1993-94 OFFICERS AND BOARD

PRESIDENT ..... SUSANNA GRADY  
PRESIDENT-ELECT ..... MIRIAM MASON  
VP/MEMBERSHIP ..... MIRIAM STAMPS  
VP/PROGRAMS .. PATTI BRECKENRIDGE  
SECRETARY ..... PADDY MOSES  
TREASURER ..... GAYLA RUSSELL  
IMM. PAST PRESIDENT ..... JUEL SMITH

### BOARD

ELAINE COLLEGE  
ALENE MAHIN  
MARGARET MATHEWS  
GAY CUIVERHOUSE  
PAMELA JORDAN  
DELIA SANCHEZ

### MEMBERSHIP COMMITTEE

NONI BRILL  
ELLEN KIMMEL  
WILMA SMITH  
LEE BLANTON  
SUSAN BUCKLEW  
SUSAN McLAIN  
ALTERNATE: DEANNE ROBERTS

ADMINISTRATOR  
ELEANOR HUBBARD  
251-9172

## ATHENA SOCIETY

P.O. Box 10813  
TAMPA, FLORIDA 33679

## Upcoming Meeting

- WHEN:** Wednesday, March 9, 1994  
5:30 p.m. - cocktails (cash bar)  
6:15 p.m. - dinner
- WHERE:** Centre Club • Top of One Urban Centre  
Kennedy at Westshore
- PROGRAM:** Delivery and Derailment - The Leadership Edge
- SPEAKERS:** Barbara Ann Blue and Diana Furr  
Business and Performance Group Inc.
- RSVP:** By March 4 with enclosed card or  
call Eleanor Hubbard (251-9172).

### CLOSED MEETING • NO GUESTS

We have all known leaders who deliver...leaders who can enable people to create outstanding results, to meet and exceed the expectations of others and themselves. We have observed or experienced the effective leadership of others and may have personally played leadership roles in many different contexts in which we helped bring out the best in others.

We have also known leaders who "derail"...leaders who reach a plateau in their careers, who are passed over, demoted and perhaps even fired. We may have seen these leaders from afar; we may have reported to one at some point in our careers; or we may have been there ourselves at some point and wondered what happened.

Through a highly interactive workshop format, we will draw on our collective experience - and tap some interesting research findings - to consider:

- What factors are critical to leader success?
- What factors lead to derailment?
- What differences are there between the factors that derail men and those that derail women?
- What are the implications of this for our leadership development and our coaching and nurturing of leadership in others?

Barbara Ann Blue and Diana Furr will facilitate a thought-provoking discussion enabling us to draw on our collective resources and learn from each other. Please plan to join us!



## President's Corner

### Miscellaneous thoughts....

A great many exciting things are happening within the Athena Society. The membership group is preparing its summary of the questionnaire and recommendations for the membership forum on March 7. In addition, the Nominating Committee's summary report is included in this newsletter. The Community Action Committee is preparing for the April seminar while the Public Issues Committee is planning an exciting program and is interested in having the seminar committee take on violence in our cities as their topic. Athena is extremely active this year, and I am hopeful that collectively we will have an impact on the issues of our community.



Several of our members are running for public office. As the number of women in local politics has decreased substantially in the past few years, please do what you can to support Candy Olson (Hillsborough County School Board), Dottie Berger (County Commission) and Paddy Moses (County Commission). Should others be running, please let us know.



A recent study predicts there will be a 45% increase in Florida's population by the year 2010. There will be an additional 6.2 million people, some of whom will bring economic expansion and others who will complicate the already overburdened social systems of our state.

In an article entitled "Let's Get Real about Feminism - The Backlash, the Myths, the Movement", (*Ms.*, Sept./Oct. 1993), Gloria Steinem is quoted as saying, "Well, we spent the first 20 years demonstrating that women can do what men can do, and most of the country believes that now. But we have not demonstrated that men can do the reverse - what women can do. Until children are raised by men as well as by women, until men aren't burdened by this compulsion to be in control or even violent, we won't have change."



Margaret Atwood's new book, *The Robber Bride*, is wonderful!



And from the National Center of Education Statistics (11/93): Nearly half (47.7%) of all 1992 seniors reported they were in academic or college preparatory high school programs. This was approximately the same proportion as in 1972. However, enrollment in the general track increased and enrollment in vocational programs decreased between 1972 and '92. Gender differences in program placement that were evident in 1972 had largely disappeared in 1992.



## News About Members

After 14 years as the City of Tampa's Director of Government Relations, **Kathy Betancourt** has assumed the same position for her alma mater, the University of South Florida.

**Lee Leavengood** has been named Director of the Division of Senior Programs at USF, a newly created division in the School of Continuing Education. She formerly was Director of Lifelong Learning.

Our deepest sympathy goes to **Alice Luckey** and **Gwynne Young** for the recent loss of their husband and father, Judge C. Luckey, and to **Sylvia Kimbell** for the loss of her father.

**Elaine M. College** has accepted the appointment to serve on the Grievance Committee for the 13th Judicial Circuit Court. The committee's function is to attempt to ascertain, to the extent reasonably possible, all facts relating to the grievances referred to it by the Florida Bar Association.

**Leslie Reicin Stein** has been touring the countryside handling contracts for GTE. In the past few months she has been to London, Edinburgh, Nashville, Phoenix, Washington D.C., San Antonio, Durham and New York City. She's partial to Durham where she can visit her son Michael, a freshman at Duke University.

## Members Invited to Heart Seminar

Tampa General Healthcare invites Athena members to "Talking Heart to Heart for Women" a seminar for teaching executive women cardiovascular care on Saturday, March 19, 8 a.m. to 3 p.m. Leading medical specialists Diane Jeffery, M.D., Debbie Rinde-Hoffman, M.D., Kathy B. Porter, M.D. and Toni Mitchell, M.D. will teach how heredity, dieting, smoking and menopause affect women's hearts. New Orleans Chef Byron Scott will then teach participants how to prepare heart healthy dishes and nationally recognized humorist RN Leslie Gibson will show how laughter reduces stress. Admission is \$5 and covers a continental breakfast, catered lunch, the seminar and a complimentary ticket to the Southern Women's Show. For more information, call 251-7275.

## Athena "Housekeeping"

"Women's Health Issues" will be the topic for an Athena Plus program scheduled for Wednesday evening, March 23, at the Pinnacle, 4141 Bayshore Blvd. Representing a wide spectrum of medical experience, five Athena physicians will each make a brief presentation and then accept questions from the floor. Those participating will be **Barbara Bachman, Moira Burke, Sylvia Campbell, Kathleen Grizzard, Dorece Norris** and **Sue Schler**. A light supper will be served at 6 p.m.; program will begin at 6:45. Chairman Linda Fries notes that those having earlier meetings who might not arrive until 7 will be able to eat during the meeting. The meal will be buffet and the atmosphere informal. RSVP by March 21 to Eleanor Hubbard (251-9172) or on enclosed green card.

Enclosed is an Operation Jumpstart flier. You are encouraged to photocopy and distribute it to women who could benefit by attending the April 23 seminar being sponsored by Athena.



**Nominating**  
*by Juel Smith, Chair*

**Committee  
Reports**

The board approved that the Nominating Committee should be chaired by the immediate Past President with the President and President-Elect to serve as ex-officio. President Susan Grady then appointed the Nominating Committee for 1993-94:

- Immediate Past President - Juel Smith
- Two Past Presidents - Phyllis Marshall  
- Sandy Frye
- One Board Member At-Large - Margaret Mathews
- One Member At-Large - Anne Kantor
- Two Alternates - Carolyn Reed  
- Wilma Smith

The Nominating Committee held its first meeting on February 15 at the Museum of African American Art. After much discussion, the Committee has recommended that the Straw Ballot procedure be replaced with a Nominating Form (to be developed).

This nominating form will be used as a guideline to serve as advisory information for the Nominating Committee only. The information received will be considered in the nominating process. Each nomination form will be numbered and collected by the Administrator who would forward them to the committee chair.

The Committee recommends that the Nominating Committee for 1994-95 consist of a total of nine members; five voting, two ex-officio and two alternates.

The immediate Past President will continue to chair the Nominating Committee and the two immediate Past Presidents (from previous years) will automatically serve on the Nominating Committee. If one or neither can serve, then the next immediate Past President will be selected, the rationale being that these members would have already experienced chairing the Nominating Committee and therefore it would establish continuity. The other Committee members will consist of: One Board member-at-large, selected by the President; one member-at-large, elected by the board; and two alternates, one selected by the President and one elected by the Board.

The Nominating Committee will meet again on Friday March 4, at noon at the Museum of African American Art to address nominations by petition from the floor and to develop a nomination form. If you have any information you would like for the Committee to consider, please send it to Eleanor Hubbard or any of the members of the Committee. Special thanks to Helen Gordon Davis and Miriam Mason for the nomination information we received.

**"Frog"**  
*by Louise Thompson, Chair*

As a Frog Committee, we're probably guilty of "jumping the pad" on the newly announced awards. (In other words, we ought to have been more clear in our instructions!) Herewith, along with apologies, is some clarification.



Reasons for nominating someone should not include activities that are part of her job duties. They also should not include activities for which remuneration is received.

Please be as specific as possible by giving us the details of the events, activities, dates or the names of those your nominee helped. (We will, of course, keep names in the strictest of confidence, if desired.)

The frog award is an incentive for "new" and "specific" assistance given to women who are entering the work force, changing careers or needing help to better realize personal potential. It's given for helping women get a "jumpstart" toward independence. The reason for nominating someone for the award should be for activities performed beginning January 1994 when the award was announced. (We know EVERY Athena member would get one for PAST activities.)

A new form is enclosed for your use. Please send it to me. If you have any questions, call me or another member of the Frog Committee: Jean Amuso, Dotti Berger, Anne Kantor, Miriam Mason or Judy Ryan. Thanks for your understanding and to those who already submitted forms, we encourage re-submission using the criteria enumerated.



# Athena Society



B R I E F I N G S

February 1994

## 1993-94 OFFICERS AND BOARD

PRESIDENT ..... SUSANNA GRADY  
PRESIDENT-ELECT ..... MIRIAM MASON  
VP/MEMBERSHIP ..... MIRIAM STAMPS  
VP/PROGRAMS.. PATTI BRECKENRIDGE  
SECRETARY ..... PADDY MOSES  
TREASURER ..... GAYLA RUSSELL  
IMM. PAST PRESIDENT ..... JUEL SMITH

### BOARD

ELAINE COLLEGE  
AILENE MAHIN  
MARGARET MATHEWS  
GAY CULVERHOUSE  
PAMELA JORDAN  
DELIA SANCHEZ

### MEMBERSHIP COMMITTEE

NONI BRILL  
ELLEN KIMMEL  
WILMA SMITH  
LEE BLANTON  
SUSAN BUCKLEW  
SUSAN McLAIN  
ALTERNATE: DEANNE ROBERTS

ADMINISTRATOR  
ELEANOR HUBBARD  
251-9172

**ATHENA SOCIETY**  
P.O. Box 10813  
TAMPA, FLORIDA 33679

## Upcoming Meeting

- WHEN:** Thursday, February 3, 1994 • 12 noon
- WHERE:** Centre Club • Top of One Urban Centre  
Kennedy at Westshore
- PROGRAM:** Love and Profit - The Art of Caring Leadership
- COST:** Guests - \$20
- RSVP:** By January 31 with enclosed card or  
call Eleanor Hubbard (251-9172).

### OPEN MEETING • GUESTS WELCOME

"It is individual people who are reshaping the workplace, rather than institutional forces dictated by top management." That observation by James Autry, a Fortune 500 executive, ought to hearten those who feel they can't make a difference by themselves.

His book "Love and Profit - The Art of Caring Leadership" argues forcefully that you don't need to sacrifice integrity and peace of mind to be successful in business.

Autry is a 30-year veteran of management, spending most of it in the publishing business. He has been editor-in-chief of Better Homes and Gardens, editor and publisher of New Orleans Magazine and editor-in-chief of the Meredith Corporation. He is a writer and poet on the side.

Autry's book will be the focus of Athena's February 3 meeting. All Athena members are encouraged to read this book, whether or not they are coming to the meeting.

But for those who will be attending, the table topics will relate to Autry's practical, concrete and concise tips on leadership. There are enough in the book to inspire some

*continued on back page*



## President's Corner

Many of our committees are meeting this month and would appreciate any input that members may wish to provide. **Mirlam Mason** is busy with Bylaws and Policies/Procedures; **Lee Blanton** will begin looking at Young Women of Promise; **Mimi Stamps** and **Suzy McLain** are planning an open forum on membership issues while **Juel Smith** and her committee are busy working out a better system for the nominating process. Please contact these chairs if you have concerns or suggestions.

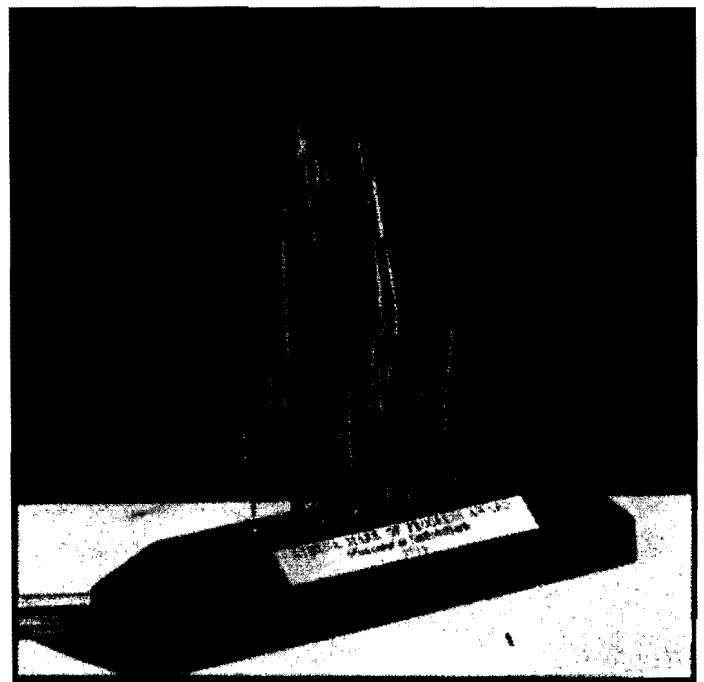
Our January meeting was truly memorable. Not only did **Barbara Romano** and her committee present an outstanding program, they also were able to build the program around one of our outstanding members - **Alex Sink**. We heard from several corporate leaders about their programs for women and then from Alex about her own advancement. As I reflect on her comments, I am mindful of the role that other successful women played in her life as she began

her career and of her charge to each of us that we have a responsibility to encourage other young women as they begin their careers.

Recently my daughter was named the next Head of St. John's Parish Day School. Three years ago the School committee would consider only a male priest and now she will become the School's leader. She will take over this leadership position in July and is quite excited about all of the challenges it offers. I wonder whom she will call upon, however, and who will support her as she seeks guidance and encouragement. I have served as her mentor, but she will need more than I as her mother can provide and I wonder if each of us is looking at this next generation and is doing what Alex has challenged us to do. I, too, will echo Alex's challenge and hope that as we look to the future of Athena we involve this next generation of young leaders not only within our membership but also in many of the activities in which we participate.



*Alex Sink accepts Athena's Mark of Progress Award on behalf of NationsBank from Mayor Sandy Freedman at January 6 meeting.*



*The new Mark of Progress Award, featuring "shattered glass," acknowledges progressive policies which reflect the aims and objectives of Athena.*



## News About Members

Congratulations to **Jeanne Tate** and husband **Mark** on the birth of 5 lb. 6 oz. **Michael**. Born on Thanksgiving morning, he joined **Erica (8)**, **Mandi (6)** and **Mark (3)** and, apparently, didn't slow **Jeanne** down abit...a week later she was back at work parttime!

**Elaine College** is grateful to the many **Athena** members who have expressed concern for her health during past months with their calls, cards and food.

Mayor **Sandra Freedman** has appointed **Marsha Griffin Rydberg** to the Tampa Housing Authority.

**Jan Abell** has been selected to serve on the American Institute of Architects 1994 Awards Jury. Five architects in the United States are chosen to evaluate projects done by U.S. architects anywhere in the world. From over 500 submissions, the jurors will individually evaluate each project and then collectively determine a short list of outstanding architecture to be visited in person. Ten projects will finally be selected to receive the American Institute of Architects 1994 Highest Honor Award as determined by this Awards Jury.

Another **Athena** member has been bitten by the political bug! **Paddy Moses** recently disclosed plans to run for the at-large District 5 County Commission seat being vacated by **Jan Platt**.

## March 3: Red Letter Day for Phyllis Marshall

It is hoped that all **Athena** members will join **Phyllis Marshall** on Thursday, March 3, when **USF's** University Center, the campus student union, will be renamed and dedicated in her honor. In an event that is rare (and possibly unprecedented), current and former students lobbied the state legislature in 1987 to have the building renamed upon **Phyllis'** retirement. (State buildings are usually renamed only upon death of noteworthy individuals.) Dedication ceremonies will begin at 4:30 p.m. outside the UC in **MLKing Plaza** to be followed by tours of the building and a Roast 'n Toast dinner at 6 p.m. Formal invitations will be received next month. **Phyllis** ends her 33-year **USF** career in June.

## Athena "Housekeeping"

Mark your calendar for the annual retreat scheduled for Friday and Saturday, July 8-9, at Sanibel Harbour Resort & Spa. All members are encouraged to attend; we'll provide details in next month's newsletter.



## Public Relations

by Sandy Frye, Chair

The excellent coverage of our January meeting by the *St. Petersburg Times* (and the possible future media attention which may be given by the publication, *Hers*) came about not just because the event was noteworthy - it was - but because we invited members of the media to be our guests. It represented the synchronized efforts of the Public Issues Committee which has been developing public issues on which Athena can adopt a position and the Public Relations Committee which seeks an appropriate public expression of those positions. In other words, if we as an organization declare ourselves on some issue, it only makes sense that we find ways to make that position known to the community. And the positive way in which we supports women and family-oriented business policies point the way

## Committee Reports

to a leadership role for this association. My thanks to Louise Thompson and Linda Goldstein for their help with this meeting.

In accepting Athena's Mark of Progress Award for NationsBank, Alex Sink noted that we, as seasoned business and professional people, could well lend support to young women starting out in careers. She made an excellent point, and I'd like to extend it a little further: We can also take time to support each other. The women who occupy public office or high-visibility positions often labor in an environment of constant criticism. A personal note of support may sound negligible but in fact is very welcome. A public letter of support for a policy one endorses is more than comforting, it is a vital link in forging a chain of voter support. Athena members individually can set as many standards for citizen responsibility as this organization does collectively.

## Nominate a Frog!



Operation Jumpstart, you may recall, is the Community Action committee's 1994 project to assist women who seek to enter the work force, change careers or better equip themselves to realize their personal potential. Athena members who help women

meet these objectives will be awarded "frogs" during meetings throughout the year and, according to Chairman Dottie Berger, it is hoped that all members qualify. Enclosed is a nomination form for immediate use or to be filed for the future. The networking program which is a part of Operation Jumpstart is scheduled for Saturday, April 23. Check next month's "Briefings" for details.

## Upcoming Meeting

*continued from cover page*

lively discussion and perhaps even encourage Athena to consider an action plan on how the organization can promote leadership in this community. At the very least, we hope the discussion will inspire members to compose their own agenda for making a difference in their workplaces.

Autry's book is written in short, easy-to-digest chapters so you don't need to read it in one sitting. In fact, it's best to read a few chapters, each of which make a separate point, and then let the book sit a day or two.

The paperback version is \$10; Inkwood Books (Platt at Armenia) has been asked to order some. You might call ahead (253-2638) to check on their supply.

# Athena Society



B R I E F I N G S

January 1994

## Upcoming Meeting

- WHEN:** Thursday, January 6, 1994 • 12 noon
- WHERE:** Centre Club • Top of One Urban Centre  
Kennedy at Westshore
- PROGRAM:** Honoring of Alex Sink  
Corporate Update  
Mark of Progress Award
- RSVP:** By January 3 with enclosed card or  
call Eleanor Hubbard (251-9172).

### OPEN MEETING • GUESTS WELCOME

The Athena Society will recognize one of its own members who has broken the glass ceiling in a highly meaningful way on January 6 when it honors **Alex Sink**. Alex is the newly appointed president of NationsBank Florida and the only woman in charge of a statewide bank - one with \$23 billion in assets and 5,200 employees! Participating in the tribute to Alex will be her husband Bill McBride, managing partner for Holland & Knight.

In addition to tracing Alex's career path, the program will include five corporations with Athena members among their executive ranks: Busch Gardens, Hillsborough County School System, the law firm of Holland & Knight, Tampa Electric Co. and The Tampa Tribune. Officials from these companies have been invited to attend with their highest ranking female employee and to update the audience on their own policies and programs regarding such matters as diversity, pay equity and day care. A brief question and answer period will follow.

NationsBank will be the first to receive the newly created Mark of Progress Award in recognition of its enlightened business policies regarding women. The award will be given periodically to organizations, institutions or companies to acknowledge their progressive policies which closely reflect the aims and objectives of the Athena Society.

*See page 2 for a report from the Public Issues Committee.*

### 1993-94 OFFICERS AND BOARD

PRESIDENT ..... SUSANNA GRADY  
PRESIDENT-ELECT ..... MIRIAM MASON  
VP/MEMBERSHIP ..... MIRIAM STAMPS  
VP/PROGRAMS .. PATTI BRECKENRIDGE  
SECRETARY ..... PADDY MOSIS  
TREASURER ..... GAYLA RUSSELL  
IMM. PAST PRESIDENT ..... JEFF SMITH

#### BOARD

ELAINE COLLEGE  
AILENE MAHIN  
MARGARET MATHEWS  
GAY CUIVERHOUSE  
PAMELA JORDAN  
DELIA SANCHEZ

#### MEMBERSHIP COMMITTEE

NONI BRILL  
ELLEN KIMMEL  
WILMA SMITH  
LEE BLANTON  
SUSAN BUCKLEW  
SUSAN McLAIN  
ALTERNATE: DEANNE ROBERTS

ADMINISTRATOR  
ELEANOR HUBBARD  
251-9172

**ATHENA SOCIETY**  
P.O. BOX 10813  
TAMPA, FLORIDA 33679



## Crime Prevention Program Set for January 26

Did you know there is a violent crime committed every 17 seconds, one property crime every two seconds and one forcible rape every five minutes? These are the shocking statistics from the FBI Uniform Crime Report, 1991.

"Live Safely in a Dangerous World" - presented by Citizens Against Crime - will be the first Athena Plus program for 1994. Citizens Against Crime is a national crime and safety awareness company with offices in 48 cities. Statewide they have done programs for GTE, Xerox, All Children's Hospital and Walt Disney World.

The seminar aims to educate people about the various aspects of crime and to help them avoid becoming victims. There will be audience participation, role playing and some humor.

A light evening meal will be catered at a cost of \$10 per person, and we'll meet in the Community Room of the Pinnacle, 4141 Bayshore Blvd., 6-8 p.m. Park in guest spots at rear of building or on the two side streets, Knights or Tambay. RSVP by January 22 to Eleanor Hubbard at 251-9172 or on enclosed card.

## Classified Ads

Interested in learning about the stock market and becoming a shrewd investor? If so, maybe you'd like to join an investment club which now has openings due to the relocation of several members. For information, call **Moira Burke, 223-7101.**

Were you a Girl Scout? The Suncoast Council is starting a support group for Friends of Girl Scouting to provide for girls what men have long provided for boys. If you're interested, call **Barbara Romano, Paddy Moses or Jan Platt.**

The Tampa Bay Regional Planning Council is sponsoring an anti-violence workshop on Thursday, January 27, at the Tampa Airport Marriott. A \$40 registration fee includes lunch for the 8 a.m. to 4 p.m. program. Purpose of the workshop is to organize an anti-violence task force; call **Bill Lofgren (577-5151)** for additional information.

## President's Corner

It was wonderful to see so many of you at the Holiday Party. I have a strong feeling that more Athena members than ever are becoming involved not only within the organization but also in the greater community outreach programs. The visibility of our members bodes well for the overall recognition of women within the Tampa community. Athena members are in a strong position to help protect that which is good within this community and assist in changing that which is not acceptable. Collectively we have a great deal of power that we need to use not only for the advancement of women in the job market but also for women in general who find themselves in difficult situations.

To help position the Athena Society for our work,

**Barbara Romano** and her Public Issues Committee have created position statements on child care and violence which join the position paper on intolerance prepared earlier this year. In addition, we also have the strong statement on education that was developed by **Sylvia Richardson's** group last year. It will be important, as we develop these position statements, that each of us is mindful of helping to correct the inequities as we see them.

Again, watch for the Athena Plus evenings that are coming up as they promise to provide fun and friendship as we participate.

I hope that each of you has a joyous holiday and wish you the very best for the new year.



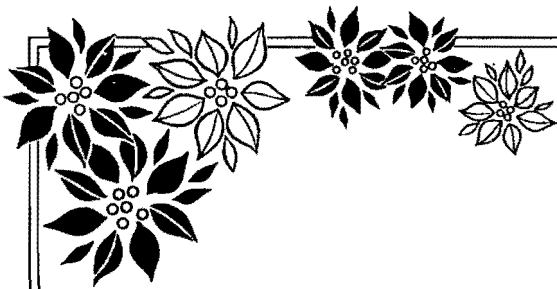
## News About Members

**Mary Jane Saunders** has been promoted to Director of the Institute for Biomolecular Science at USF. This is a research consortium of 72 faculty from the Colleges of Medicine, Engineering and Arts and Sciences and local hospitals that conduct research in molecular biology and biotechnology. Last year alone, the USF members brought in more than \$6 million in federal grants. Most of these grants are multi-year and represent about \$30 million in total funding.

Our sympathies to **Judy Ryan** for the recent loss of her grandmother.

**Candy Olson** has been appointed (by **Phyllis Busansky**) Vice Chair of the Cable TV Advisory Committee and to the School Board's Citizen Advisory Committee.

**Jusan Bucklew** has been sworn in as U.S. District Judge for the Middle District of Florida (Jacksonville to Orlando to Tampa to Naples); she will be located in Tampa.



*May the joy  
of the season  
be with you  
and  
your loved ones.*

## Athena "Housekeeping"

As in past years, Athena is participating in the Christmas Bureau Adopt-A-Family program with a contribution to a family headed by a single female. Funds are also being given to Camp Anytown, a project of The National Conference (formerly NCCJ), to promote understanding and cooperation among students from diverse racial, religious and ethnic backgrounds. In lieu of soliciting from the membership, the contributions this year were derived from Athena's operating funds.

Date for the March dinner meeting mentioned in last month's newsletter has been changed. It is now set for Wednesday the 9th at the Centre Club. **Barbara Ann Blue** and **Diana Furr** will conduct an interactive workshop on leadership.

Most of you are aware that Athena changed its post office box early this year, but your secretary might not know. Please notify him/her that it is now P.O. Box 10813, Tampa, 33679. Mail addressed to the former box is delayed (sometimes as long as a week) and soon will not be forwarded at all, so DO make the change.

Looking for a last-minute Christmas gift for yourself? How about a sterling silver Athena pin or pendant? We have one of each left. If you're interested, call Eleanor Hubbard at 251-9172.

**Reminder:** While you're relaxing (yes!) over the holidays, try to begin reading "Love and Profit: The Art of Caring Leadership" by James A. Autry. It will be the focal point of the February 3 meeting.

### Directory change:

Margaret Mathews  
Akerman, Senterfitt & Eidson, P.A.  
P.O. Box 3273 Tampa 33601  
Phone: 223-7333  
Fax: 223-2837



## Community Action

by *Laura Waller*,  
Chair

Our mission statement for this year is to assist women who seek to enter the work force, change careers or better equip themselves to realize their personal potential. Our 1994 program is called Operation Jumpstart, and our goals are:

1. To hold a program on networking
2. To award "frogs" to members of Athena who help other women get jobs

## Committee Reports

The networking program is set to be held Saturday, April 23. To publicize this event, we'll need the help of all Athena members.

The Operation Jumpstart "Frog" Awards will begin soon. Our hope is that all Athena members will qualify for a "frog" during the year ahead.

The next meeting of the Community Action Committee will be held at 5:30 p.m. on January 5. Please call me at 221-1956 for details.

## Public Issues

by *Barbara Romano*,  
Chair

Three issues have been presented to the Athena membership for confirmation - positions on education, choice and intolerance.

In its most recent deliberations on the subject, members offered many suggestions for action to combat intolerance including:

- \* Targeting cable networks
- \* Developing and promoting PSA announcements on the issue
- \* Joining The National Council (formerly National Council of Christians and Jews)
- \* Recognizing companies which support diversity (being done in January program)
- \* Holding diversity sessions for Athena members
- \* Sponsoring a public forum on diversity
- \* Focusing on the Chamber of Commerce
- \* Taking a diversity program to the schools (In this regard, the Athena Board has acted upon a recommendation from the Public Issues Committee to donate funds to The National Conference "Camp Anytown", a program on intolerance for youth.)
- \* Setting up a speakers bureau for Martin Luther King Day
- \* Developing a mentor program for promoting diversity

- \* Calling on Athena members to attend forums, seminars and conferences on diversity
- \* Networking with leaders of NAACP, Tampa Business Guild, etc.

Based upon the Athena position papers, President **Susan Grady**, at the request of the Public Issues Committee, has written to U.S. Senators Graham and Mack urging their votes in confirmation of Dr. Joycelyn Elders as Surgeon General; to Governor Lawton Chiles asking that **Helen Gordon Davis** be appointed to the State Board of Regents; to Chancellor Charles Reed pressing for women candidates for the presidency of USF. Additionally, the Athena Public Relations Committee will respond, when needed, to the issues acted upon by Athena when there are related concerns in the community.

There were suggestions for individual action as well which included writing letters to the editors of area newspapers; speaking up rather than remaining silent whenever intolerance is heard; exposing children to different ethnic, religious, etc. backgrounds early in development; organizing multicultural dialogue groups to meet in members' homes; withholding support from businesses which have not demonstrated a commitment to diversity; cancelling cable in protest.

Ahead in 1994 are issues of child care, violence and pay equity.



# Athena Society



B R I E F I N G S

December 1993

## Upcoming Meeting

**WHEN:** Thursday, December 2, 1993  
5:30 p.m. - Cocktails (cash bar) • 6:30 p.m. - Dinner

**WHERE:** Dome Room, Plant Hall • University of Tampa

**RSVP:** By November 29 with enclosed card or call  
Eleanor Hubbard (251-9172).

### MEMBERS ONLY - NO GUESTS

Music will be provided by the Tampa Preparatory School Chamber Ensemble and, in the spirit of the season, a short sharing exercise will follow.

Please bring an inexpensive gift to exchange with another Athena member. In keeping with our theme for the year, it is suggested it be something that will help develop leadership potential.

**PARKING:** All parking on campus is open to Athena members that night except student parking. To reach most of what will be available, veer left at the main entrance on Kennedy and look for faculty and staff parking spaces.



## Holiday Buffet

Set for Sunday, December 12

Don your holiday finery and be prepared (as usual) for the best food and the most congenial crowd in town when Athena members gather at the home of **Barbara Reeves** for this annual event. Barbara is at 36 Columbia Drive on Davis Island, just across the street from HCC and the parking lot there will be available during our party hours: 5 to 7 p.m. There's no charge for members and one guest; additional guests are \$20. Make your reservations either by indicating on enclosed red card or by phoning Eleanor Hubbard prior to December 8. Please list your guests' names.

### 1993-94 OFFICERS AND BOARD

PRESIDENT ..... SUSANNA GRADY  
PRESIDENT-ELECT ..... MIRIAM MASON  
VP/MEMBERSHIP ..... MIRIAM STAMPS  
VP/PROGRAMS .. PATTI BRECKENRIDGE  
SECRETARY ..... PADDY MOSES  
TREASURER ..... GAYLA RUSSELL  
IMM. PAST PRESIDENT ..... JUEL SMITH

### BOARD

ELAINE COLLEGE  
AILENE MAHIN  
MARGARET MATHews  
GAY CUIVERHOUSE  
PAMELA JORDAN  
DELIA SANCHEZ

### MEMBERSHIP COMMITTEE

NONI BRILL  
ELLEN KIMMEL  
WILMA SMITH  
LEE BLANTON  
SUSAN BUCKLEW  
SUSAN McLAIN  
ALTERNATE: DEANNE ROBERTS

ADMINISTRATOR  
ELEANOR HUBBARD  
251-9172

### ATHENA SOCIETY

P.O. Box 10813  
TAMPA, FLORIDA 33679





## Programs

by Patti Breckenridge  
VP/Programs

## Committee Reports

Ad Hoc Nominating  
by Juel Smith  
Chair

**JANUARY LUNCH** The Public Issues Committee, which hosted such an inspiring meeting on intolerance in October, will also host the first meeting of 1994: Thursday, January 6, at the Centre Club. This will be a closed meeting; topic will be announced in the next newsletter.

**ATHENA PLUS I** The first of three programs planned by the Athena Plus subcommittee will be held January 26 in the home of an Athena member. This informal evening program will focus on personal safety and security. More details to come.

**FEBRUARY LUNCH** The program committee recommends that everyone read the book "Love and Profit: The Art of Caring Leadership" before the February 3 meeting as it will be the focal point of our discussion. The book costs \$10; James A. Autry is the author. (Get someone to give it to you for Christmas and you'll be set!) Guests are welcome at this meeting, but you might suggest they too read the book so they'll feel a part of the discussion.

**MARCH DINNER** Athena members Barbara Ann Blue and Diana Furr will conduct an interactive workshop on leadership at dinner March 3. This will be a closed meeting at the Centre Club.

**ATHENA PLUS II** The second of these informal meetings will focus on the topic of personal medical care. Taking advantage of the medical expertise among Athena membership, this will be a continuation of the dialogue begun at the 1992 retreat. The tentative date is March 30.

**ATHENA PLUS III** The third of these "extra" meetings will be a barbecue in the country. Mark your calendar for Saturday afternoon, April 30. More details later.

An ad hoc nominating committee of past presidents met on September 29 and October 13 at the office of Suzy McLain to address the following concerns:

- \*Review and define the straw ballot
- \*Review nominating committee procedures
- \*Discuss a limitation on members succeeding themselves on the committee and the number of committee meetings

The ad hoc nominating committee recommended the organization continue the straw ballot procedure. It is recommended, however, that the following statement be added to the ballot:

The straw ballot is non-binding; it is used as a guideline. It serves as advisory information for the nominating committee only. The results, however, of the straw ballot will be seriously considered in the nominating process. The straw ballot will be numbered and made available for examination upon request. The Executive Administrator will tally the ballot and the Chair of nominating committee should receive and verify the ballot.

Members of the nominating committee will be elected by the membership. The committee will consist of seven members: three past presidents, one board member, one member at large and two alternates appointed by the President. Members shall serve for a one year term only with the entire committee to be elected each year.

The nominating committee should not be restricted to one meeting; it will meet as often as necessary and shall adopt, amend and publish standing policies and procedures for the nomination process, subject to approval by the Board of Directors.



## Committee Reports *continued*

### Membership

*by Mimi Stamps, VP/Membership*

You did it! The membership committee is happy to report that we have received completed questionnaires from almost 75 Athena members. This represents over 50% of our membership.

The committee will be meeting soon to examine, analyze and discuss the findings of the survey and will then formulate proposals to change and enhance our membership policies and procedures. These proposals will be presented to members at a membership forum at a later date. At that time input and suggestions will be welcomed, and a dialogue on the proposals will be undertaken. The final step for the committee will be the presentation of the proposals to the Board of Directors for their action.

## Fashion in Focus on November 30

Don't forget Fashion with Friends at Boulevard on Tuesday, November 30, 6-9 p.m. (RSVP to Eleanor Hubbard, 251-9172). There will be wine, mini-buffet and informal modeling of JH Collectibles by Athena members **Dottie Berger, Sandy Frye, Candy Olson, Bonnie Saks, Barbara Ann Blue** and more. **Anne Kantor** still needs models (sizes 4-16) and reminds members they can enjoy 15% savings all evening on anything in the store! Address is 1910 S. Dale Mabry.

In this issue you'll find reports from several committee chairs. As many of these groups are doing such interesting work, I thought it might be helpful to the membership if you heard from the chairs directly.

A special congratulations goes out to **Alex Sink** whom I heard today has been named as the first woman to head a statewide bank operation. She will serve as the President of NationsBank. Congratulations to Alex.

I am saddened to announce that **Delia Sanchez** has taken a leave of absence so that she and her husband may travel to Spain to handle some family matters. This leave of absence has necessitated her resignation from the Athena Board. Under the bylaws, the Board is charged

## President's Corner

with selecting a new person to fill the vacancy. I consulted with last year's Nominating Chair **Moira Burke**, looked at the straw ballot and took the name of **Nancy Ford** to the Board.

I am very pleased to announce that Nancy was unanimously approved to fill the remaining term for Delia. Nancy, of course, brings her vast experience as one of the founders of the Athena Society as well as her concern for its long-range future, and for the various and sundry issues that are now being studied by

the Membership Committee. I welcome Nancy to the Board and know that each of you will support our decision to have her complete Delia's remaining term.

**Carolyn Reed** is working on the retreat. She and her committee have identified the Sanibel Harbor and Spa Resort as the location and are putting together a very special program for us.

Please make sure you have marked your calendar for all the special events that are coming up. I look forward to seeing each of you at these functions and hope that all of you enjoy a wonderful holiday season.



## News About Members

Congratulations to **Alex Sink** on her new position at NationsBank: President! As head of a \$23 billion organization with 5,200 employees, she now becomes the only woman in charge of a statewide bank. Alex, you really ARE special and everyone in Athena is very proud and happy for you and your family.

**Helen Gordon Davis** is starring in the Stageworks production of "Love Letters" at the Falk Theatre, December 4-5. Tickets (\$25) may be reserved by calling 253-6243. Saturday performance is at 8 p.m., Sunday at 3 p.m. and both are for the benefit of The Spring. It's the story of a couple looking back at their lives by reading old love letters.

Mayor **Sandy Freedman** was recently honored in Washington, D.C. as a recipient of the 1993 Job Training Partnership Act Presidential Award. She received it for the City of Tampa's Outstanding Summer Jobs Campaign this past year. By creating over 8,000 summer jobs, Tampa had more jobs per capita than any other program in the country, a distinction it has achieved repeatedly.

Our heartfelt sympathy to **Judy Munson** who recently lost her father and to **Susan Bucklew** who lost her mother. Our thoughts are with you both.

## Athena "Housekeeping"

The 1993-94 membership directory was distributed at the last meeting and will be available at both the December dinner and Holiday Party. If you prefer to pick up yours at some other time, call Eleanor Hubbard at 251-9172.

A number of Athena Plus programs are planned this year, and subcommittee chair Linda Fries is seeking homes large enough to accommodate 30-40 members for the evening gatherings. If you'd like to volunteer, call her at 287-2280.

## Nancy Ford Elected to Athena Board

**Nancy Ford** has been elected by the Board of Directors to fill the unexpired term of Delia Sanchez who recently resigned due to personal business which will take her out of the country for several months.

Founder of Athena and former president (1980-81), Nancy has remained active and involved and last year served as Publicity/Public Relations Chair. It was Nancy who first had the vision for an organization for professional women who "needed each other and could help other women." In 1975 she shared her idea when she invited three friends to lunch at the Tower Club: **Irene Hadley**, **Susan Leisner** and **Suzy McLain**. Following their discussion, they decided to each invite 3 or 4 women and again come together. Thus was born Athena!

The group was so successful in its mission that Nancy suggested Athena sponsor a committee to create a statewide organization which could have impact on state issues. Thus was born the Florida Women's Network in 1978! It is now called the Florida Women's Alliance, has 200+ members and is comprised of some of Florida's most powerful women. (**Velma Thomas** is currently president of FWA.)

Nancy's wide experience includes teaching and real estate prior to finding her niche in public relations. She has served as VP of the First National Bank, Special Assistant to the President at USF, Director of Public Affairs at USF's Medical School and VP for Development at St. Joseph's Healthcare Center. Nancy, obviously, knows Athena from the ground up and will be a welcome addition to the '93-'94 board.

# Athena Society



## B R I E F I N G S

### 1993-94 OFFICERS AND BOARD

PRESIDENT ..... SUSANNA GRADY  
PRESIDENT-ELECT ..... MIRIAM MASON  
VP/MEMBERSHIP ..... MIRIAM STAMPS  
VP/PROGRAMS .. PATTI BRECKENRIDGE  
SECRETARY ..... PADDY MOSES  
TREASURER ..... GAYLA RUSSELL  
IMM. PAST PRESIDENT ..... JUEL SMITH

#### BOARD

ELAINE COLLEGE  
ALENE MAHIN  
MARGARET MATHIEWS  
GAY CULVERHOUSE  
PAMELA JORDAN  
DELIA SANCHEZ

#### MEMBERSHIP COMMITTEE

NONI BRILL  
ELLEN KIMMEL  
WILMA SMITH  
LEE BLANTON  
SUSAN BUCKLEW  
SUSAN McLAIN  
ALTERNATE: DEANNE ROBERTS

ADMINISTRATOR  
ELEANOR HUBBARD  
251-9172

### ATHENA SOCIETY

P.O. Box 10813  
TAMPA, FLORIDA 33679

### Upcoming Meeting

**WHEN:** Thursday, November 4, 1993  
11:55 a.m. - lunch

**WHERE:** Hyatt Regency Downtown

**PROGRAM:** Leading Us into Tomorrow:  
Beyond Gender Differences

**SPEAKER:** Loyd S. Pettegrew, Ph.D.  
Professor of Communications  
University of South Florida

**COST:** Guests - \$20

**RSVP:** By November 2 with enclosed card or call  
Eleanor Hubbard (251-9172).

Join us for a memorable luncheon conversation and reassessment of our intellectual leadership capital! Here are Dr. Pettegrew's cliff notes on the upcoming conversation he'll have with us...

Our nation seems caught up in a decade-long celebration of our differences. While this may confirm and legitimize us as individuals, it takes precious time and resources away from big picture issues that may very well determine our nation's long-term viability. Arguing about whether female or male leadership styles are more effective is about as helpful as that gang in the Miller Lite commercials arguing over whether the beer is less filling or tastes great.

There is some wisdom and legitimacy in both points of view. But dwelling on that subject to the detriment of larger questions like "What is the most effective way to run American organizations?" is about as useful as rearranging the deck chairs on the Titanic! We will examine this larger question from the point of view of Margaret Wheatley's *Leadership and the New Science*.

*continued on page 3*



## President's Corner

This month you will note that there are a lot of events going on that involve Athena members. Each of you is encouraged to attend the different events and enjoy the friendships of other Athena members. In addition, I've asked **Susan Casper** to put an insert in the newsletter that will allow each of us to support the ongoing cancer research by purchasing our holiday cards through the Children's Cancer Center.

The evening meeting in October was wonderful and the additional time allowed for a great deal of discussion about intolerance in our community. **Barbara Romano** and her committee are to be commended for their work and will need each member's support as they prepare a list of specific tasks that the group will undertake to correct.

The ad hoc committee on the nominating process has been meeting regularly under the wonderful leadership

of immediate past president, **Juel Smith**. The committee is almost ready with a recommendation for the Board. If it is approved, it will be reviewed by the Long Range Planning Committee and then given to **Miriam Mason** and her bylaws committee for any implementation changes that may be necessary.

The membership committee and the ad hoc committee have sent out their questionnaire and are hoping to receive a 100% response. If you have not already completed yours, please do so and return to Eleanor Hubbard as soon as possible.

**Patti Breckenridge** and her committee are preparing a letter to Attorney General Janet Reno and will be keeping you informed of the resulting response.

I have received a copy of the complaint that has been filed by Molly O'Dea against the Cheval Country Club. It is one of the first complaints of discrimination to be brought under section 760.60 of the Florida Statutes. While Ms. O'Dea is an executive with Xerox and is a member of the club through a membership held by herself, she has been denied golfing privileges on Saturday mornings, the only time she is free to golf. She has requested admission to the men's association at Cheval and has asked that the Commission on Human Rights and/or the Attorney General eliminate Cheval's discriminatory practices. This case should be followed by all of us as it comes on the heels of the work that **Gay Culverhouse** did at Palma Ceia ... and just when we think that we are making progress.

I wish each of you a wonderful Thanksgiving.

## Entertainment Extras

"Forever Plaid" is playing at the Jaeb Theatre (Performing Arts Center) and Athena has the best seats in the house, thanks to **Judy Munson**! Plan to sing along and have a wonderful time on Thursday, November 11. Called "glorious" by Time Magazine and "screamingly funny" by the New York Post, Forever Plaid features beautiful four-part harmony and memorable favorites like "Love is a Many Splendored Thing," "Three Coins in the Fountain," and "Sixteen Tons." Tickets are \$24.50: buy one, get one free. (Individual tickets may be purchased for \$12.25.) The theatre will be set cabaret style with tables for four, and we'll accommodate the first 64 we hear from.

Please make out checks to Athena Society and mail to the P.O. Box. Show starts at 7 p.m. and runs 1 1/2 hours without intermission, so you could be home by 9. If you'd like a Plaid Picnic (light dinner), add \$6.50 to your check. Cash bar will be set up in lobby.

**Anne Kantor** will be hosting an evening of Fashion with Friends at Boulevard, 1910 So. Dale Mabry, on Tuesday, November 30, 6 to 9 p.m. There'll be wine, a mini-buffet and presentation of the JH Collectibles spring line which Anne describes as

career classics that are well designed and reasonably priced. In addition, Athena members will enjoy a 15% discount. Models (all sizes) are needed and are encouraged to volunteer by calling Anne at 254-4411.

Join a group of Athena members on Saturday, December 4, for an Old Fashioned Country Christmas Stroll in Dade City. There's entertainment, Christmas treats, carriage rides and all the downtown antique and specialty shops will be open for festivities from 5 to 9 p.m. If you'd like to come along, call **Paddy Moses** at 289-0800. Transportation will be available.

*tinued from front page...*

Dr. Pettegrew has published over twenty scholarly articles on organizational behavior and management practices in national and international journals as well as a book on health communication. He has an impressive, varied background in both the academic and business arenas. Members are especially encouraged to bring CEO's from their companies or others in leadership positions.

### Membership To Vote On Intolerance Statement

Last month, Athena held a special "Members Only" meeting on intolerance. The only non-member attending was the facilitator, Dr. Roy Kaplan, Regional Director of The National Conference (formerly The National Conference of Christians and Jews).

Speakers were Mayor **Sandy Freedman**, County Commissioner **Sylvia Kimbell** and City Council Member **Linda Saul-Sena** who spoke from their unique perspectives as elected officials and caring members of the community. Particularly poignant were the personal anecdotes they shared with the 70 members in attendance. Each of them challenged Athena members to do their part to eradicate prejudice and bigotry whenever and wherever they encountered it.

Following their talks, each table tackled ways that Athena members - as individuals and as a group - could take specific initiatives. These suggestions are now before the Public Issues Committee. For those who could not attend, there is a space on the ballot for the Intolerance Position Statement to add your suggestions to those being considered by the Committee.

The ballot - with the statement as proposed at the meeting - is enclosed. Please indicate your position, sign and return to P.O. Box 10813, Tampa, 33679 prior to November 4. If you prefer, you may bring the ballot to the luncheon on the 4th.



### CROWN Created At USF *by Phyllis Marshall*

CROWN (Committee to Recognize Offices for Women Now) is an informal women's group consisting of faculty, staff and community women. We see our role at USF as supportive to the work of search committees convened at USF. We first met on August 3, 1993, and one of our initial goals was to encourage the hiring of women and minority applicants to positions at the USF Tampa campus and our regional campuses.

The following Athena women are active on this committee: **Dore Beach, Susan Casper, Nancy Cole, Helen Gordon Davis, Nancy Ford, Pat Frank, Sandy Frye, Ann Henderson, Ellen Kimmel, Lee Leavengood, Phyllis Marshall, Suzy McLain, Margaret Miller, Barbara Pankau, Marsha Rydberg, Alex Sink, Juel Smith and Mimi Stamps.** It is our intention to develop and extend a network of qualified candidates who would be capable of bringing exceptional talent to USF.

Being a woman does not inherently qualify an individual to serve in leadership capacities at the university, but we believe that bringing the names and accomplishments of potential female and minority candidates to the attention of formally convened search committees will enhance any pool.

We believe this activity represents an important change in direction to the way that hiring has been conceived and acted upon in the past. The committee has concluded that it must continue to meet as there are so many search committees currently operating, and we need to make sure they are aware of the fine female candidates available.

It is interesting to note that of 30 candidates for USF President (selected from the original list of over 100), there are 10 women. On October 18 another cut was made by the Board of Regents, leaving eight finalists, three of whom are women. The three are former Athena member **Betty Castor**, Florida Commissioner of Education; Betty Asher, President of the University of South Dakota; Eleanor Smith, Provost of William Paterson College.



## News About Members

**Delia Sanchez**, former administrator of Head Start, added to her long list of community awards last week by being named 1993 Hispanic Woman of the Year. Given by Tampa Hispanic Heritage Inc., the award is for promoting Hispanic culture and addressing social issues affecting the Hispanic population.

**Susan Grady** has been named to the National Board of the Klingenstein Foundation at Columbia University. This is committee that allocates funds and selects candidates who will receive the Foundation's fellowships.

**Irene Hadley** had surgery during the summer and, while recuperating, had her sister and brother-in-law from Phoenix as houseguests; she also remodeled her kitchen. Fully recovered, she's now looking forward to a trip to NYC with a friend during Thanksgiving week. They'll stay at the Grand Hyatt (at Grand Central Station) and plan to visit the Metropolitan Museum of Art, take in a Broadway play, shop and enjoy the sights and sounds of the city.

Our deepest sympathy to **Lee Blanton** whose father died unexpectedly of a heart attack last month.

To fill her "leisure hours" (oh yes!), **Jeanne Tate** and family have opened a pizza shop at 233A East Davis Boulevard: Tate Brothers Pizza. Those on the Island, downtown or in Hyde Park can enjoy free delivery from what appears to be a mouth-watering menu of pizzas, salads and subs. Open daily; phone 251-BROS. It should be noted that Jeanne runs a bathing suit shop at the beach, has three little ones at home, is expecting another in December AND continues to practice law!

While she hasn't yet officially announced, **Dottie Berger** plans to "embark on a bold change in careers" and run for District 4 County Commission seat. The district encompasses Sun City, Brandon and Plant City.

**Louise Thompson** had a busy summer: She was appointed by the NAACP to the Hillsborough County School Board Bi-Racial Advisory Committee and was also named to the board of Project Link, a non-profit organization serving children and families in at-risk communities. In August, Creative Loafing selected Louise as one of 12 leaders in the category of Ethics for "standing up for ethical change."

**Babs Titus**, who last month suffered a stroke, is making wonderful progress in her recovery and wishes to extend her thanks to the many Athena members who have shown their support with prayers, cards and visits. She says that show of caring has done more for her than any of her medication! She's doing so well, in fact, that she's proceeding with plans to marry Judge Donald C. Evans on November 26. The newlyweds will then honeymoon in New England. We look forward to seeing Babs back in circulation...possibly at some of our holiday gatherings.

### Athena "Housekeeping"

Last call for jewelry in '93! If you'd like to order a stick pin or pendant of the Athena logo, write check to Doug Rubottom and mail to Eleanor Hubbard no later than November 15. Price for 14K is \$95.32; for sterling silver, \$28.22 and for vermeil, \$29.82.

Athena's promotional brochure is being revised for the current year. If you wish to make changes in your career category listing, please call **Sandy Frye** (286-8659) by November 2.

### Classified Ads

Green wicker chaise lounge, newly upholstered in pink and green fabric, \$360. Call **Evelyn Walborsky**, 251-5023.

Looking for a unique office location? The historic Tar Theatre Building on the Franklin Street Mall now has space to lease at a good price. For information regarding an entire floor (4,000 sq. feet) or less, call **Barbara Romano**, 223-2606.



# Athena Society



## B R I E F I N G S

### 1993-94 OFFICERS AND BOARD

PRESIDENT ..... SUSANNA GRADY  
PRESIDENT-ELECT ..... MIRIAM MASON  
VP/MEMBERSHIP ..... MIRIAM STAMPS  
VP/PROGRAMS .. PATTI BRECKENRIDGE  
SECRETARY ..... PADDY MOSES  
TREASURER ..... GAYLA RUSSELL  
IMM. PAST PRESIDENT ..... JUEL SMITH

#### BOARD

ELAINE COLLEGE  
ALENE MAHIN  
MARGARET MATHEWS  
GAY CUIVERHOUSE  
PAMELA JORDAN  
DELIA SANCHEZ

#### MEMBERSHIP COMMITTEE

NONI BRILL  
ELLEN KIMMEL  
WILMA SMITH  
LEE BLANTON  
SUSAN BUCKLEW  
SUSAN McLAIN  
ALTERNATE: DEANNE ROBERTS

ADMINISTRATOR  
ELEANOR HUBBARD  
251-9172

**ATHENA SOCIETY**  
P.O. Box 10813  
TAMPA, FLORIDA 33679

### Upcoming Meeting

**WHEN:** Tuesday, October 5, 1993  
5:30 p.m. - cocktails (cash bar)  
6:15 p.m. - dinner

**WHERE:** Centre Club

**PROGRAM:** Intolerance

**SPEAKERS:** Sandy Freedman, Mayor  
Sylvia Kimbell, County Commissioner  
Linda Saul-Sena, City Council Member

#### CLOSED MEETING • NO GUESTS

The Tampa Bay Area has been in the national spotlight lately as the result of the unfortunate burning of Christopher Wilson. The aftermath has put the focus on the area by the national media, most notably The Wall Street Journal.

The issues raised by recent events are too important to ignore, thus the Public Issues Committee has developed a special "Members Only" meeting on intolerance with Athena members Sandy Freedman, Sylvia Kimbell and Linda Saul-Sena. They will talk about their concerns on this timely issue and what we can do as individuals and as a group to make our voices heard.

The purpose of the meeting is to involve all Athena members, so, following the presentations, we will break into groups to determine what this organization can do to counter prejudice and bigotry by developing a specific agenda.

A position paper written by the Public Issues committee on intolerance will be reviewed and discussed.

As caring citizens of this community, we urge all Athena members to come, to participate and to offer their views on how we can take a stand against hatred and bigotry and for understanding and tolerance of differences.

For reservations, mail the enclosed card or call Eleanor Hubbard (251-9172) prior to Saturday, October 2.



## President's Corner

The new year has gotten off to a terrific start, thanks to the help of a wonderful Board and numerous contributing members. Athena, like any group, is only as vital as the membership is active and involved. I want every member to feel as if this is her society, her network and her support system. I encourage any of you who feel removed or uninvolved to call Eleanor Hubbard or a committee chair and let one of them know of your interest.

A great deal is going on within Athena. **Patti Breckenridge** is following the guidelines suggested in the survey she and her committee sent to the membership. There will be more closed meetings and fewer speakers which will allow us to get to know one another as well as help focus on the remarkable expertise that exists within the Society.

**Gwynne Young** is busy with her committee on long range planning. She is using the Articles of Incorporation, the statement of purpose and all of the information that was gathered at the retreat as the basis for the new long range plan for Athena.

**Barbara Romano** is involved with the Public Issues Committee and has found a great deal to address. Letters have been written to Governor Chiles, Chancellor Reed and Senators Graham and Mack. The committee is in charge of the program for October, and you will see a great deal of research and information presented at that dinner meeting. Because the work of this committee is so central to the Society, I have invited Barbara to attend any board meeting so that the concerns of the committee may be immediately addressed.

**Laura Waller** has met with her Community Action Committee and will be calling on members to help her put together workshops for women who are re-entering the job market or who have been displaced as homemakers.

The Membership Committee is meeting with an ad hoc committee to clarify the long term membership goals and determine any limitations to our size. Their first step has been to hold several meetings and devise a questionnaire for the membership so that all opinions may be considered as they formulate their recommendations. This committee faces many challenges and is open to hearing from any Athena member. Please contact Membership Chair **Mimi Stamps** or **Suzy McLain**, the ad hoc chair.

**Juel Smith**, as the Immediate Past President and Chair of the Nominating Committee, has agreed to lead a group composed of past presidents in the examination of the nomination process. There is some feeling that the current process is not effective and that our organization is too large for the current nominating procedure. She will keep you posted.

The Board is open to any and all suggestions and will give them every consideration. The Society is composed of wonderfully talented and gifted people who have a great deal to give to each other as well as to the greater Tampa community. I look forward to keeping you informed on all that is going on.

In closing, our thanks to **Sandy Frye** for the development of this updated newsletter format.

## Classified Ads to be Accepted

Want to sell that seldom-used camcorder? Looking for travel companions to cruise the Caribbean? Have a civic cause you want to promote? Beginning next month we'll help by accepting classified ads from members on a space available basis, free of charge. The ads must be in writing and may be mailed to P.O. Box 10813, Tampa 33679. Deadline is the 15th of each month, and the editor reserves the right to edit copy.



## It's the Year of the Bylaw Review

Article XII of Athena's bylaws requires that the bylaws be reviewed biennially in odd-numbered years. Accordingly, the Bylaws Committee will be looking at the bylaws and Athena's policies and procedures for suggested revisions and/or amendments. If a member has any suggested additions, deletions or revisions to either the bylaws or the policies (copy of both is in front of Athena membership binder), she should write her suggestions to Bylaws Committee Chair **Miriam E. Mason** at P.O. Box 2409, Tampa, FL 33601-2409.

## Athena to Reserve Table at Mayor's Breakfast

The annual Mayor's Partnership Breakfast to honor individuals and corporations that have contributed significantly to the public/private partnership in employment is scheduled for Wednesday, October 6. Sponsored by the Tampa Private Industry Council, it will be held in the ballroom of the Tampa Convention Center at 7:30 a.m. MC will be WTVT news anchor John Wilson.

Athena will be well represented on the "inside" by Mayor **Sandy Freedman**, Chairman of the Council **Paddy Moses** and by **Linda Goldstein**, creator of the feature video.

Anyone wishing to sit at the Athena table may make reservations by calling Eleanor Hubbard (813-9172) prior to September 29. Please mail your check for \$11, payable to Athena, to P.O. Box 10813, Tampa, 33679. The table for eight will be filled on a first-come basis.

## Kudos To...

**Laura Waller** who was named Executive Woman of the Year at a luncheon of the Network of Executive Women last Friday before a group of more than 300 guests. Laura was honored for achievement within her profession and in the community. She is the tenth winner of this award, seven of which have been bestowed on Athena members. **Pat Frank** was honored as a finalist.

**Velma Thomas** who has been appointed president of the Florida Women's Alliance, filling the unexpired term of Dora Harrison who has moved to Colorado. A statewide organization of 200+ community leaders, the Alliance was created by the Athena Society as its very first project (in 1978).

## Future Dates of Interest

**November 4**

Luncheon at Hyatt Downtown

Subject:

*"New Leadership: Beyond Gender Differences"*

You are encouraged to bring your company CEO or others in leadership positions at your place of business.

**December 2**

Holiday Dinner • (members only)

**December 12**

Holiday Buffet • 5 to 7 p.m.



## Trip Tales

*Athena members were on the go during the summer and shared some of their adventures with our editor.*

A trip north this summer was a very special one for **Delia Sanchez**. First she attended graduation ceremonies at the JFK School of Government, Harvard University, where her son Frank received a Master's degree in Public Administration. (He now works for Conflict Management Inc., handling negotiations and mediation primarily in Latin American countries.) After leaving Cambridge, Delia travelled abit in New England and continued on to Toronto where she visited her former Columbia University roommate whom she hadn't seen for 10 years.

**Paddy Moses** has been traveling! In May she and **Patti Breckenridge** were in a group which travelled to Georgia for a white water rafting trip. In June Paddy and Patti flew to Denver where they rented a car and drove through Independence Pass which had just opened that weekend. Snow was piled high, and they described the weather and scenery as "fabulous!" Later in the month Paddy and **Phyllis Busansky** flew to Mexico for 17 days to study Spanish at the Institute of San Miguel. (San Miguel is northwest of Mexico City at an elevation of 6500 feet.) They enrolled in a high impact course:

four hours a day, one on one. They both lived with Mexican families with Paddy declaring that to be the most memorable part of the trip. They attended a graduation ceremony, a dinner-dance, picnics and parties in several Mexican homes. Paddy, unfortunately, was ill for a week and missed out on her studies. Phyllis, we understand, is "fluent" but Paddy claims that in order to communicate with her, every other word needs to be English! Apparently she didn't get enough of Mexico; she's off again the end of the week to inspect the ruins...with **Kathy Betancourt**. Work was interfering with these trips, so Paddy has sold her business effective October 1. Now she's really going to take off!

But for racking up miles, the distinction probably goes to **Juel Smith** who made her second trip of the year to Africa to solidify plans for USF to become the first American university to affiliate with the Convention for the Creation of the International Center for Bantu Civilizations (CICIBA) in Libreville (Gabon). As a result, USF students and faculty will have an opportunity to study in Africa and, in exchange, African students and professors may come to USF. Juel in her role as Execu-

tive Director of the Institute on Black Life is to be congratulated, as this is a big coup for the University.

**Katie Brown** spent two wonderful months in Ann Arbor, Michigan where husband Jack was doing research at the University of Michigan. Coincidentally (or maybe not?), two of their daughters and an 18-month-old granddaughter live there so Katie spent lots of time immersed in family activities, reading, gardening and walking...the latter to get in shape for future long walks on the Bayshore in South Tampa. Yes, after many years in Lutz, the Browns will be moving in about two weeks to the Pinnacle, 4141 Bayshore Blvd., #1601. Their new phone number will be 831-7758.

This trip is to come: **Suzy McLain**, with husband Mark, is planning to satisfy a lifelong ambition to see the Georgian architecture of Savannah firsthand. After visiting friends in North Carolina, Suzy and Mark plan to spend several days visiting and studying some of the famous historical buildings in Savannah. And in Suzy's words, "We also plan to eat ourselves out of shape on the Savannah Low Country cuisine".

# athena society inc.

## BRIEFINGS

### President

Susan Grady  
251-8481

### President-Elect

Miriam Mason  
251-9200

### VP/Membership

Miriam Stamps  
974-4201

### VP/Programs

Patti Breckenridge  
259-7674

### Secretary

Paddy Moses  
872-7863

### Treasurer

Gayla Russell  
251-5094

### Immediate Past Pres.

Juel Smith  
974-4727

### Directors

Elaine College  
987-5156

Gay Culverhouse  
870-2700

Pamela Jordan  
962-4511

Alene Mahin  
839-5641

Margaret Mathews  
223-4456

Delia Sanchez  
223-1845

### Administrator

Eleanor Hubbard  
251-9172

WHEN: Thursday, September 2, 1993

12 noon

WHERE: Centre Club  
Top of One Urban Center  
Kennedy at Westshore

PROGRAM: Leadership

RSVP: By August 31 with enclosed card or  
call Eleanor Hubbard (251-9172)

### C L O S E D M E E T I N G - N O G U E S T S

Responses to the survey distributed during the summer by Program Chair Patti Breckenridge made it clear what members want: more time to get to know each other and more time to explore what true leadership is all about. So that's what the Program Committee has decided to deliver.

A year devoted to both themes begins with this lunch which Ann Henderson will facilitate. Come prepared to talk about

- an instance where your leadership made a real difference
- an instance where your leadership failed to achieve the desired results.

By sharing these experiences with others at your table, you'll not only get to know each other better, but we will have begun the dialogue on what works and what doesn't in the area of leadership. We'll use a seating system that should encourage members to meet those they don't yet know.

LOOKING AHEAD - Please note that the October meeting will be a dinner at the Centre Club on Tuesday, October 5. It also will be members only; details in the next newsletter.

HOUSE HUNTING - We're seeking a host for a meeting that might be held during the year in a private home. Anyone having a house large enough to accommodate 50-60 people and with ample parking is urged to call Patti Breckenridge (259-7674) or Eleanor Hubbard (251-9172).

PLEASE  
NOTE

Reminder.....

Dues are due; checks should be mailed to P.O. Box 10813,  
Tampa, 33679.

Directory corrections are past due but will still be  
accepted if received within next 3-5 days. Mail to box  
also or fax to 254-5585.

RETREAT  
SUMMARY

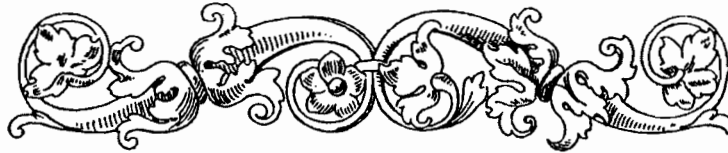
Fifty-four Athena members attended this year's annual retreat at Mt. Dora, July 9-11. Sunday morning, as the last segment of the retreat, Pres. Susan Grady led a long range planning exercise. Members present were seated at round tables with each table being asked to list its priorities for Athena as an organization. Copies were provided of Athena's purpose as set forth in the Articles of Incorporation as a tool to use in this process. These priorities were compiled and Gwynne Young, Long Range Planning Chair, has the master list. As might be expected, the discussion was lively and many different ideas were expressed. A number of primary themes came out:

1. Athena as an organization needs to increase its visibility.
2. Athena needs to provide more ways for its members to get to know each other (network, formally and informally), service to and help our members.
3. Athena needs to expand its service orientation related to young women.
4. Athena needs to continue work to promote more involvement from its members and to increase the diversity of its membership.
5. Athena needs to continue to look for ways to affect public policy.

The members present believed that Athena needs to emphasize and structure networking and internal support as a primary means of bringing the organization together to maximize our personal potential and then reach out through a focus on programs based upon our purpose as outlined in our Articles of Incorporation and goals agreed upon in the long range plan. The group listed 31 potential goals for the next three years.

All in all members present provided tremendous input for our long range planning committee. Any members with additional ideas or suggestions are encouraged to contact Gwynne Young, chair of the Long Range Planning Committee, at 223-7000 (O) or 837-1037 (H).





**Susan Bucklew** has been recommended for nomination by President Clinton to the position of U.S. District Judge, Middle District of Florida. The District covers the middle part of Florida from Jacksonville to Orlando to Tampa to Naples. Susan, however, will be located in Tampa.

Before being appointed, Susan must undergo an investigation by the FBI and the Justice Department and, once nominated, must be confirmed by the U.S. Senate. The process leading to the actual recommendation was lengthy. Approximately 60 attorneys and judges applied for the two openings in the Middle District; 29 were interviewed by the Middle District Judicial Nominating Conference which recommended six to Senator Bob Graham for his consideration. The Senator personally interviewed each of the six and recommended two for the two openings - Susan and Judge Henry Adams from Jacksonville.

Susan would like to thank the many members of Athena who helped her: Juel Smith wrote a letter to Senator Graham on behalf of Athena; Arthenia Joyner is a member of the Judicial Nominating Conference which recommended Susan; many Athena members also either called or wrote members of the Nominating Conference or Senator Graham in support of Susan's nomination. Susan may not be aware of everyone who helped but would like to thank Lee Blanton, Katherine Essrig, Adelaide Few, Pat Frank, Miriam Mason, Margaret Mathews, Marsha Rydberg, Leslie Stein, Jeanne Tate and Gwynne Young for their letters or phone calls. Former Athena member Betty Castor also was very helpful.

**Jan Platt** has been given the Consumer Champion award by the Florida Consumer Action Network (FCAN). The award recognizes outstanding public officials who show political leadership in consumer and environmental issues. FCAN is a statewide organization of 40,000 members that promotes good government, protection of consumer interests and environmental concerns.

**Judy Dato** was one of 19 graduates of Leadership Hillsborough awarded a diploma on June 10. Keynote speaker at the Centre Club ceremony was Gay Culverhouse.

**Moira Burke** has been promoted to Clinical Associate Professor of Ophthalmology at the USF College of Medicine where she has been teaching since 1975. She's also the proud mother of two recent graduates - Brendan from Rice University, Ryan from Plant High.

N  
E  
W  
S  
  
A  
B  
O  
U  
T  
  
M  
E  
M  
B  
E  
R  
S

10981 P...  
10981 P...  
athena society  
inc

N A  
E B  
W O  
S U  
T  
M  
E  
M  
B  
E  
R  
S

**Anne Kantor** has had a busy summer moving her elegant Tampa dress shop. After 15 years in the same location, Boulevard moved 1/2 block south to the Carriage Trade Plaza at 1910 So. Dale Mabry. It's truly been a good business year for Anne...she recently was the recipient of the First in Fashion Award. This award is made by the International Academy of Merchandising and Design in recognition of community service.

**Patti Breckenridge** has been chosen by Media General in Richmond, VA, to head its corporate training committee which includes training managers from all Media General newspapers.

**Arthenia Joyner** has been elected to a one year term as Chairman of the Hillsborough County Aviation Authority.

**Lee Blanton** recently associated with Marsha Rydberg's firm, Rydberg, Goldstein & Bolves, to practice in the area of commercial litigation.

We've run out of space but next month plan to highlight some of interesting trips taken during the summer by Athena members. YOUR news would be welcome...mail to Eleanor Hubbard at P.O. Box 10813, Tampa, 33679.



# athena society inc.

## BRIEFINGS

President  
Susan Grady  
251-8481

President-Elect  
Miriam Mason  
251-9200

VP/Membership  
Miriam Stamps  
974-4201

VP/Programs  
Patti Breckenridge  
259-7674

Secretary  
Paddy Moses  
872-7863

Treasurer  
Gayla Russell  
251-5094

Immediate Past Pres.  
Jucl Smith  
974-4727

Directors  
Elaine College  
987-5156

Gay Culverhouse  
870-2700

Pamela Jordan  
962-4511

Alene Mahin  
839-5641

Margaret Mathews  
223-4456

Delia Sanchez  
223-1845

Administrator  
Eleanor Hubbard  
251-9172

No luncheon meeting in July. Members are encouraged to attend the retreat at the Lakeside Inn: July 9-11. (We've already got a record crowd of 52!) If you need a room, a roommate or transportation, call Eleanor Hubbard at 251-9172. The charming community of Mt. Dora will be the setting for this wonderful weekend of relaxing, socializing, getting better acquainted with fellow members and participating in an excellent program. Registration checks (\$125) are due July 1.

In lieu of an August meeting, we'll again attend a performance of the Musical Theatre Project of Tampa.

**WHEN:** Saturday, July 31, 1993

7:30 p.m.

**WHERE:** The Playhouse  
Tampa Bay Performing Arts Center

**WHAT:** "Broadway '93"

**COST:** Members - No charge  
Guests - \$15.00

**RSVP:** By July 16 with enclosed card or  
call Eleanor Hubbard (251-9172)

A block of tickets is being held for Athena and will be released after that date, so please respond promptly. Tickets will be distributed that evening at the door. Bring your family, bring your friends!

Those who have attended the past two years have been thrilled with the performances...the students are unbelievably talented. Ann Reinking is the Artistic Director and the students are being trained by some well known local talent plus nationally known stars Gregory Hines and Dudley Moore.

This will be a special evening, so plan to be a part of it.

IMPORTANT -  
PLEASE READ

ATHENA "HOUSEKEEPING"

Notices for dues have gone out; payable prior to August 15.

Request for directory page updates have just gone out; due prior to August 2 with photo deadline of August 16.

If you've not returned your committee preference card, please do so...it's not too late. Your participation is needed!

Last call for Athena pin or pendant requests. Last call, that is, for this first production order. As soon as a minimum is reached, we'll order again.

Please discontinue sending mail to the old P.O. box. New one is P.O. Box 10813, Tampa, 33679.

DIRECTORY CHANGE

**Helen Gordon Davis** has a new phone number: 254-8507.

On June 6 **Jan Platt** received the first annual Environmental care Award from the Egmont Key Alliance, a citizen support group. Egmont Key is a state park and national wildlife refuge located near Fort DeSoto. After this first presentation, the award will be permanently renamed the Jan Platt Environmental Care Award. Jan says she's "thrilled" because she has never been so honored.

**Jeanne Tate** has been recognized as one of the YWCA's Outstanding Women of the Year.

**Margaret Mathews** has been appointed to chair the Florida Bar Appellate Rules Comm. beginning July 1.

**Amelia Bishop** has been appointed Chairperson of the Probate and Trust law Committee of the American Bar Association Young Lawyers Division for 1993-94.

N  
E  
W  
S  
A  
B  
O  
U  
T  
  
M  
E  
M  
B  
E  
R  
S

N  
E  
W  
S  
A  
B  
O  
U  
T  
M  
E  
M  
B  
E  
R  
S

**Kudos to Linda Goldstein** who recently won two Crystal Reel Awards from the Tampa Bay Area Chapter of the Florida Motion Picture and Television Assn. The awards were created to honor achievement in the motion picture, television and recording industries in the State of Florida. Linda won the top Crystal Reel Award for best special program/documentary for a video on the Florida Black Business Investment Board and a Bronze Award for best industrial film for a video on natural gas for Peoples Gas System.

**Judie Taggart** is in the process of packing up for a move to Jacksonville! In mid-July she'll assume the position of Fashion Director of Stein Mart, an upscale offprice chain with 58 stores in 17 southeastern states. From corporate headquarters in Jax, Judie will also act as PR spokesperson and supervise the customer advisory program. We wish her the best of luck and look forward to occasional visits when she's working with the two local stores.

**Barbara Reeves** was recently elected President of The Tampa Historical Society and is a newly elected trustee to the Tampa Bay History Center.

**Barbara, Diane Bostow and Velma Thomas** attended the recent Spring Conference of the Florida Women's Alliance and reported on the outstanding program... in particular the stories of a female physician who was a POW during the Gulf War. The meeting, held in Pensacola, was themed toward "Breaking the Barriers and Beyond".

**Marsha Griffin Rydberg** has been appointed to the Florida Commission on the Status of Women by Senate President Ander Crenshaw. She also recently was elected President of the Stetson Lawyers' Association. **Leslie Stein** was honored as the Outstanding Alumni Representative.

# athena society inc.

## BRIEFINGS

President  
Juel Smith  
974-4727

President-Elect  
Susan Grady  
251-8481

VP/Membership  
Katie Brown  
949-6225

VP/Programs  
Lee Leavengood  
974-2403

Secretary  
Ruth Himes  
223-7000

Treasurer  
Miriam Mason  
251-9200

Immediate Past Pres.  
Moira Burke  
971-2715

Directors  
Gay Culverhouse  
870-2700

Pamela Jordan  
962-4511

Jan Platt  
286-7588

Bonnie Saks  
254-5442

Delia Sanchez  
223-1845

Miriam Stamps  
974-4201

Administrator  
Eleanor Hubbard  
251-9172

**WHEN:** Wednesday, June 9, 1993

5:30 p.m. - cocktails (cash bar)  
6:30 p.m. - dinner

**WHERE:** The Centre Club  
Kennedy at Westshore Blvd.

**PROGRAM:** Business meeting - Agenda to include:

Formal introductions of new members  
(see page 2)  
Election of officers/directors  
(see page 3)  
Installation  
Dues proposal (see page 3)  
Committee reports

### C L O S E D M E E T I N G - N O G U E S T S

This is always a relaxed and special evening as we pay tribute to the outgoing board, welcome the incoming and meet the new members. Join us!

To reserve for the dinner, return the enclosed card by Saturday, June 5. If you prefer, you may call Eleanor Hubbard at 251-9172.

Reminder: June 10 is the last day for reserving a room at the Lakeside Inn in Mt. Dora for the Retreat. Phone number there is 800/556-5016. Check for registration fee of \$125 should be mailed to Athena (P.O. Box 10813, Tampa 33679) prior to July 1. Need roommate or transportation, call Eleanor Hubbard.

No luncheon meeting in July; July 9-11 Retreat. No luncheon meeting in August. As in the past two years, we'll attend the Musical Theatre (Broadway '93) at Tampa Bay Performing Arts Center on Saturday evening, July 31. No charge for members; guests \$15. Reservation deadline is July 16. More detail in next month's newsletter.

N  
E  
W  
  
M  
E  
M  
B  
E  
R  
S

The following women have been extended invitations to join the Athena Society and have accepted. We welcome:

BIBBY, Deirdre L.  
Executive Director, Museum of African American Art  
BOLT, Carmen Marla  
Central Florida Area Director, Social Security Admin.  
BUSANSKY, Phyllis  
Hillsborough County Commissioner  
CAMPBELL M.D., Sylvia Deal  
General Surgeon  
DATO, Judith Gardner  
Administrator, Hillsborough County Public Schools  
FRANK, Stacy Collier  
Attorney - Arnold, Morris, Frank & Schabacker, P.A.  
GRIZZARD M.D., Kathleen Moss  
Internist, Drs. Winslow & Grizzard, P.A.  
HANNA, Jeanie Elizabeth  
Assistant Hillsborough County Attorney  
KOENIG, Barbara M.  
Co-owner/Exec. VP, Winner Koenig & Assoc.  
NORRIS M.D., Dorece G.  
Physician  
RYAN, Judith L.  
Manager, Tampa Electric Company  
SAUNDERS, Mary Jane  
Assoc. Professor/Biology, USF  
SCHWENKE, Carol Lynne  
Priest, Holy Innocents Episcopal Church  
SCRIVEN, Mary  
Attorney - Carlton, Fields  
VENERO, Jenna Sprecher  
Law Enforcement Major, Fla. Marine Patrol

PARTY SET  
JUNE 12

The annual party to honor these new members will be held at the home of **Marsha Rydberg**, 2606 Prospect Road, on Saturday, June 12, from 6 to 8 p.m. Our usual lavish buffet will be handled by the Hospitality Committee under the direction of Rhonda Trainor.

Each member is entitled to bring one guest at no charge; additional guests will be \$10 each and are very welcome. RSVP to Eleanor Hubbard at 251-9172 or by enclosed card prior to June 7.

Driving directions from Kennedy and MacDill Avenues:  
Travelling south on MacDill, pass through 3 traffic lights. Prospect is fourth street beyond light; turn left; house is on right in first block. It's suggested that cars be parked on only one side of the street, preferably south side.

'93-'94  
SLATE

The following slate has been proposed for 1993-94 by the Nominating Committee:

President	Susan Grady
President-Elect	Miriam Mason
VP/Membership	Mimi Stamps
VP/Programs	Patti Breckenridge
Secretary	Paddy Moses
Treasurer	Gayla Treasurer
Immediate Past Pres.	Juel Smith

BOARD MEMBERS

For 2-year term:	Returning:
Elaine College	Gay Culverhouse
Alene Mahin	Pamela Jordan
Margaret Mathews	Delia Sanchez

MEMBERSHIP COMMITTEE

For 2-year term:	Returning:
Noni Brill	Lee Blanton
Ellen Kimmel	Susan Bucklew
Wilma Smith	Suzy McLain

Alternate: Deanne Roberts

The Nominating Committee was comprised of Chair Moira Burke, Wanda Lewis-Campbell, Terry Cone, Carolyn Reed, Casey Shear, Cindy Sontag, Velma Thomas, Betty Tribble and Babs Titus. Juel Smith and Susan Grady were ex officio members.

DUES  
PROPOSAL

Memo from Susan Grady

The Board of the Athena Society (at its May 20 meeting) has proposed an increase in dues for the 1993-94. The Board is very aware that dues have remained almost the same since 1986 when President Stella Thayer and her Board recommended an inclusive fee which included all luncheons and annual expenses. Last year the Board increased the fees by a small amount and then found it necessary to ask for contributions for the holiday project. The Board feels that as a professional organization we must be financially responsible and cover our expenses each year without relying on our reserves to finance part of our annual budget.

The Board is therefore recommending that dues be increased to \$300. Over \$200 of this will go toward luncheon expenses (two dinners), the new member reception and the holiday party. The remainder of the money will go toward funding special projects such as the Young Women of Promise and the expenses of operation for the organization. A detailed breakdown of the budget will be presented at the June meeting when we will vote on the increased dues. We look forward to seeing you in June.

POLICY  
GUIDE  
FOR  
MEMBERS

Enclosed is a copy of policy and procedure guidelines approved by the Board, developed to help all of us clarify the ways in which we operate. We understand that P & P change as the organization evolves and we expect that over time these will change. Please familiarize yourself with them and add them to your membership directory. They will not be reprinted this year, so we'll ask you to retain them when we distribute new directory pages in the Fall.

NEW  
ADDRESS

Don't forget that Athena has a new mailing address: P.O. Box 10813, Tampa 33679. While mail continues to be forwarded from the old box, there IS a three-day delay. So if timing is important, please use the new address.

NEED YOUR  
NEWS!

We're interested in your news...of promotions, births, deaths, community involvement, vacations or just your thoughts (if they're profound!) Please fill out and return the enclosed yellow form or file for future use.

DATES

Dates to remember - details in future mailings:  
June 9 - Dinner meeting - Installation of board;  
introduction of new members  
June 12 - Party to honor new members; 6 to 8 p.m.  
July 9-11 - Retreat at Lakeside Inn, Mount Dora.

BOARD  
MEETING

Summary of March 25 Board Meeting  
Voted to hold Retreat at Lakeside Inn, Mount Dora on the weekend of July 9. Discussed the re-scheduling of several programs during year and the shifting of meeting location; next year regular schedule at Centre Club will resume. Report given by Co-Chair Lee Blanton on Young Women of Promise program. She reported new nomination forms were created this year. Also noted that committee suggests that at least one member serve for at least two years to provide continuity. Membership Committee gave report on nominees and its recommendation. Board voted to accept 15 of the candidates. Invitations will be extended and the list printed in the June newsletter; orientation is set for May 13.

Tampa, Florida 33601  
P.O. Box 1666

athena society  
inc.

**BUCKLEW  
FINALIST  
FOR POST**

**Susan Bucklew** this week was named one of the six finalists for two federal judicial posts in Tampa. Senator Bob Graham announced the recommendations of the Middle District nominating conference selected by him. Graham will make two recommendations to President Clinton for the lifetime appointments and, if approved, the names will be passed on to the Senate for confirmation.

**WEDDINGTON  
TO SPEAK  
IN JUNE**

As the victorious lawyer in the groundbreaking Roe v. Wade case, Sarah Weddington made history. Weddington will tell the dramatic story of the fight for abortion rights and give new insight to continued attacks on women's reproductive freedom in the U.S. when she addresses a benefit luncheon in Tampa on June 28 at noon at the Holiday Inn Ashley Plaza. The \$35 tickets can be purchased by calling Lynn Jackson, 948-2996.

**KIMBELL  
SPONSORS  
SYMPOSIUM**

A race relations symposium sponsored by Hillsborough County Commissioner **Sylvia Rodriguez Kimbell** is set for May 7 and 8 at the Hyatt Hotel in downtown Tampa. Purpose of the symposium is to examine race relations and develop a strategy to combat racial intolerance. County commissioners last month voted unanimously to support Kimbell's efforts. For more information, call 272-5314.



# athena society inc.

## BRIEFINGS

President  
Juel Smith  
974-4727

President-Elect  
Susan Grady  
251-8481

VP/Membership  
Katie Brown  
949-6225

VP/Programs  
Lee Leavengood  
974-2403

Secretary  
Ruth Himes  
223-7000

Treasurer  
Miriam Mason  
251-9200

Immediate Past Pres  
Moiria Burke  
971-2715

Directors  
Gay Culverhouse  
870-2700

Pamela Jordan  
962-4511

Jan Platt  
286-7588

Bonnie Saks  
254-5442

Delia Sanchez  
223-1845

Miriam Stamps  
974-4201

Administrator  
Eleanor Hubbard  
251-9172

WHEN: Thursday, May 6, 1993  
11:55 a.m. - luncheon

WHERE: Hyatt Regency Tampa  
211 No. Tampa Street

PROGRAM: 1993 Young Women of Promise

COST: Guests - \$20.00

This year the committee has opted to have no speaker and instead devote the entire program to highlighting the accomplishments of the honorees. Fourteen truly outstanding young women have been selected:

Amanda Arnold	Tampa Preparatory School
Marie E. Higgins	Gaither High School
Charity Kauffman	Jefferson High School
Lisa M. Marshburn	Bloomingtondale High School
Jessica Akins	Brandon High School
Shannon Anderson	Bloomingtondale High School
Adrian Chastain	Tampa Preparatory School
Miriam Goldstein	Berkeley Preparatory School
Ingrid T. Lim	Hillsborough High School
Hien T. Nguyen	East Bay High School
Chanel A. Reedy	Chamberlain High School
Kattron L. Rhodes	East Bay High School
Candice L. Streff	Armwood High School
Kristin A. Yerkes	Plant City High School

The final, special touch will be the presentation of the plaques to the honorees by Mayor **Sandy Freedman**.

We've been subjected to a great deal of negative news around the nation and the world the past few months. If you want a change, want to feel good about today's teens, join us to meet these representatives of the Bay Area's best...you'll be inspired!

Two requests: 1) This is always a well-attended meeting, so please reserve early...or at least on time: by May 3. 2) Try to arrive early. Parking in Fort Brooke can be "challenging" if there are several large functions in town. Early will assure you a spot.

To reserve for the luncheon, return the enclosed card by May 3 or call Eleanor Hubbard at 251-9172.

Dear Athena Members:

Our Program Committee is to be commended for an outstanding April program with our own Athena member **Gay Culverhouse**, Chairwoman of the Greater Tampa Chamber of Commerce. Special thanks to Gay for such an enlightening and enthusiastic presentation on the goals she has set for the Chamber.

The Public Issues Comm., chaired by **Sylvia Richardson**, has completed two of four position papers that were proposed to membership. Special thanks to **Pat Frank** who presented our proposed position on education at the April meeting. Included with this newsletter you are receiving policies and procedures to assist us in better performing our organizational duties and responsibilities; clip these into your directory for easy reference. Thanks to **Susan Grady** and her committee for a job well done.

As always, the Membership Committee (this year under the direction of **Katie Brown**) had an exciting and challenging job especially when we have so many outstanding women in Tampa. However, of the 22 candidates proposed, 15 were recommended for the Board's approval. This means we have acquired 29 new members over the last two years which brings our membership to 148! These numbers have created a concern pertaining to meeting accommodations, the need to network with each other and basically getting to know who we all are. Thus an ad hoc committee has been appointed, comprised of former VPs of Membership, to work with the in-coming Membership Committee to revisit the entire issue of membership. This committee will meet monthly to examine criteria and in-take of new members as well as develop a questionnaire so that members will be actively involved in the decision-making process. **Judie Taggart** has agreed to chair this committee; co-chair will be the new VP of Membership.

As you know, May is the month we pay tribute to the outstanding Young Women of Promise. YWP Co-chairs **Katherine Essrig** and **Lee Blanton** have a wonderful meeting planned. Can you believe this is our last open meeting?

Thank you for your continued support, and I look forward to seeing you on May 6.

Juel S. Smith  
President

L  
E  
T  
T  
E  
R

F  
R  
O  
M

T  
H  
E

P  
R  
E  
S  
I  
D  
E  
N  
T

Tampa, Florida 33601  
P.O. Box 1666

athena society  
INC.

MEMBERSHIP  
MORATORIUM  
IN EFFECT

A number of membership concerns are being addressed by an ad hoc committee comprised of Athena's former Vice Presidents of Membership. The committee, under the chairmanship of former President Judie Taggart, is meeting monthly to discuss all aspects of membership and will make recommendations to the elected Membership Committee. The board has placed a moratorium on membership for 1993-94; it could be lifted if the Membership Committee made such a request based on the research and study currently being conducted.

JEWELRY  
AVAILABLE

Athena's new logo has been captured in silver and gold and is now available in jewelry! A sample displayed at the recent orientation for new members was enthusiastically received; it will be on display at the June 9 dinner also. Available as a stick pin or pendant, it is 7/8" across and almost 1 1/2" high. If we receive orders for 15 or more, cost will be \$95.32 (includes 6.5% sales tax) for 14K gold; if we receive orders for 21 or more, cost will be \$28.22 (includes sales tax) for sterling silver. 14K plating over sterling is available for an additional \$1.60. Checks - made out to Douglas Rubottom - may be mailed to Eleanor Hubbard or brought to June 9 meeting. Commissioned for the exclusive use of Athena members, the first pins/pendants will be delivered about July 1.

# athena society inc.

## BRIEFINGS



President  
Juel Smith  
974-4727

President-Elect  
Susan Grady  
251-8481

VP/Membership  
Katie Brown  
949-6225

VP/Programs  
Lee Leavengood  
974-2403

Secretary  
Ruth Himes  
223-7000

Treasurer  
Miriam Mason  
251-9200

Immediate Past Pres.  
Moirra Burke  
971-2715

Directors  
Gay Culverhouse  
870-2700

Pamela Jordan  
962-4511

Jan Platt  
286-7588

Bonnie Saks  
254-5442

Delia Sanchez  
223-1845

Miriam Stamps  
974-4201

Administrator  
Eleanor Hubbard  
251-9172

WHEN: Thursday, April 8, 1993

11:55 a.m. - luncheon

WHERE: Wyndham Harbour Island Hotel

COST: Guests - \$20.00

PROGRAM: "The New Chamber of Commerce"  
(After 107 Years!)

SPEAKERS: Gay Culverhouse, Chairwoman  
Greater Tampa Chamber of Commerce

Harvey Schmitt, President  
Greater Tampa Chamber of Commerce

This new Chamber, under the able direction of our two speakers, is being described as clearly focused, regional in its thinking and more accessible than ever to those it serves.

Luncheon guests will get a quick overview of the Chamber, its mission, its plans and its exciting new programs - programs that broaden the involvement of small and minority-owned businesses.

The Chamber is one partner every business needs!

To reserve for the luncheon, return enclosed card by April 5 or call Eleanor Hubbard at 251-9172.



SEMINAR  
WELL  
RECEIVED

Seminar Report from Susan Leisner, Chair  
The Athena seminar, We the Future, held on March 10 was a big success. Those who didn't attend missed an outstanding event. Our two primary speakers were lively and informative, and our panel of local experts was impressive. Most importantly, the seminar was attended by many community leaders - both male and female - and resulted in the most publicity that Athena has ever received for a single event. The Tribune carried a front page story in its business section the week before and both The Times and Tribune reported extensively on the seminar the morning after. I thank all the members of the seminar committee for their hard work and Nancy Ford in particular for the press coverage.

NEW LOGO

We have a new logo and a new address! The logo, created by a local artist under the direction of Sandy Frye, will be used on all materials printed from this moment on. (The inventory of newsletter shells, envelopes and other materials will, however, be utilized internally until the supply is depleted.) The logo, below, made its first appearance on the organization's promotional brochure earlier this month and was widely acclaimed. The new address is P.O. Box 10813, Tampa 33679 and may be used immediately...though the old number will be intact for another month.



ABOUT  
SCHEDULE  
CHANGES

Because of the fine programs which have drawn larger than usual crowds plus schedule adjustments for some of our speakers, we have changed locations and meeting dates several times this year. Be assured, however, that the Centre Club is still considered "home base" and our usual meeting date is still the first Thursday of the month.

CALENDAR

Having said that, we'd like to notify you of important dates for the coming months and suggest you mark them all on your calendar and attend as many as possible:

May 6	Young Women of Promise - lunch, Hyatt Downtown
June 9	Installation of officers; introduction of new members - dinner, Le Bordeaux
June 12	New member party - late afternoon
July 9-11	Retreat at Lakeside Inn, Mount Dora. Details will be provided in a mailing next week. No lunch meeting in July.

As of March 29, Alex Sink will be Florida Consumer Banking Executive for NationsBank, thereby overseeing consumer operations for 290 branches. Previously Executive VP, Alex has been with the bank (formerly NCNB) since 1974, in Florida since 1984 and in Tampa since 1989.

N  
E  
W  
S  
A  
B  
O  
U  
T  
M  
E  
M  
B  
E  
R  
S

Susan Grady has returned from six weeks in New York City where she attended Columbia University, the recipient of a Klingenstein Fellowship. As one of ten heads of independent schools from around the world in this intensive study program, she did research on administrative structures and studied the philosophy of education; educational reform; sociology of schools and the classroom; politics, gender issues and multi-cultural concern. While it was an incredibly rewarding experience, Susan now finds herself on a really tight schedule playing "catch up".

Helen Gordon Davis, founder of The Centre for Women, was the honored guest at the organization's 15th anniversary party recently. Founded in 1978 as the Women's Survival Center, it is Helen's proudest achievement of her 18-year political career...a viable tribute to her hard work and dedication to the concerns of women.

Our heartfelt sympathy goes to Paddy Moses for the loss of her stepbrother during the storm which hit the West Coast earlier this month. In an effort to help the many families in the Hudson area who were devastated by winds and water, she is collecting household items, clothing and furniture for the organized drive of a local church. Anyone wishing to donate items may drop them off at Paddy's office, 110 No. MacDill Avenue.

Marsha G. Rydberg just became the first female attorney from Hillsborough County to join The Florida Bar Board of Governors; her term begins in June. She has also been asked to serve on the Leadership Tampa Alumni Board.

Tampa, Florida 33601  
P.O. Box 1666

**athena society**  
INC.

**Gwynne Young** has been elected a member of the five-person Executive Committee of Carlton Fields for a one-year term.

Athena members currently comprise one-third of the non-profit board that will run the proposed convention center hotel. Joining **Sharon Kilpatrick** and **Laura Waller** (appointed by the Mayor) is **Mimi Stamps** who was recently appointed by the Tampa City Council.

On February 24 in Tallahassee, **Jay and Ann Ross** were presented the 1993 Florida Arts Recognition Award as art patrons. The award acknowledges outstanding initiative, leadership or excellence in supporting the arts in Florida. Recipients must have demonstrated a significant contribution to the advancement of the arts through either a lifetime commitment or recent major achievement.

**Jan Platt** has been named Chairman of the Agency on Bay Management. A committee of the Tampa Bay Regional Planning Council, it has representatives from all levels of government, port authorities, fishermen, etc. Jan has served on the agency for seven years, the first five as Chairman.

N  
E A  
W B M  
S O E  
U M  
T B  
E  
R  
S

# athena society inc.

## BRIEFINGS

President  
Juel Smith  
974-4727

President-Elect  
Susan Grady  
251-8481

VP/Membership  
Katie Brown  
949-6225

VP/Programs  
Lee Leavengood  
974-2403

Secretary  
Ruth Himes  
223-7000

Treasurer  
Miriam Mason  
251-9200

Immediate Past Pres.  
Moirra Burke  
971-2715

Directors  
Gay Culverhouse  
870-2700

Pamela Jordan  
962-4511

Jan Platt  
286-7588

Bonnie Saks  
254-5442

Delia Sanchez  
223-1845

Miriam Stamps  
974-4201

Administrator  
Eleanor Hubbard  
251-9172

WHEN: Wednesday, March 3, 1993

5:30 p.m. - cocktail (cash bar)  
6:30 p.m. - dinner

WHERE: Tampa Museum of Art  
601 Doyle Carlton Drive

COST: Guests - \$20.00

PROGRAM: Goddess and Polis: The Panathenaic Festival

SPEAKERS: Dr. Pamela Russell  
Curator of Classical Art  
Tampa Museum of Art

We previously had announced this would be a closed meeting due to limited space. The situation, however, has changed: we've been allotted a larger dining area and therefore can accommodate more people. SO, feel free to invite guests to enjoy this exciting program with its heavy emphasis on the Athena of the fifth century B.C.

At that time every Greek city/state (polis) honored its gods with festivals...the most glorious being one to honor Athena, goddess of wisdom, war and all that Athenians admired. First we'll hear remarks by Dr. Pamela Russell who will then conduct a tour of the museum's own 250-object collection of classical antiquities, the orientation center ("It's Greek to Me") and finally the Goddess exhibit. The latter is a 63-object show on loan from the Hood Museum at Dartmouth.

You'll see important artifacts from Ancient Greece: vases, coins, sculpture, etc., most from 300-600 B.C. The museum is also proudly displaying an ancient gold laurel wreath from the Olympic games - on loan from Emory University. To round out what surely will be a special evening, we'll enjoy a dinner of authentic Greek cuisine. Plan to attend!

To reserve for the dinner, return enclosed card by March 1 or call Eleanor Hubbard at 251-9172.

Please use the card to RSVP **only** for the March 3 meeting. (RSVP's for seminar should be made on a registration form.)



22 PROPOSED  
FOR ATHENA  
MEMBERSHIP

Enclosed you will find a list of the twenty-two women who have been nominated for membership, their sponsors and co-sponsors. Any member who would like to endorse or object to a proposed member shall indicate her position in writing by March 1 by mailing to Membership Chair Katie Brown, 1405 Julie Lagoon, Lutz 33549 or by fax: 949-4506. The committee will be meeting the following day, and all such correspondence will remain confidential among committee members.

RESERVE  
EARLY FOR  
SEMINAR

Seminar Alert! You should have received a letter from Juel Smith in the past two days regarding the March 10 seminar. This is going to be an outstanding program...enlightening in every way. Want to know where the power is in Tampa? You'll hear about it from two who have researched it thoroughly, understand it all and want to share their knowledge. It's all in a written report which will be given to each participant. You are urged to reserve NOW by sending in the form from the folder with a check for \$55 per person.

BALLOT  
ENCLOSED

Note enclosed ballot on Athena's first position paper. Please return prior to March 4.

N

Our heartfelt sympathy goes to **Juel Smith** for the recent loss of her grandfather.

E A

**Emmy Acton** has been elected Secretary of the Florida Assoc. of County Attorneys and has been appointed to the Florida Bar Continuing Legal Education Committee.

W B M

S O E

U M

T B

E

R

S

**Elaine Shimberg** has a new book on the market: Gifts of Time published by William Morrow. A non-fiction hardback, it is the story of Fred Epstein, M.D. a pediatric neurosurgeon at NYU in New York City. He operates on children with brain stem and spinal cord tumors. The February issue of Readers Digest features a condensation, and it will be a Literary Guild alternate selection in the Spring. Available in bookstores in April, it is the story of Dr. Epstein as a human being and three of his most dramatic cases. This is Elaine's tenth book, her fourth on a med-

N  
E  
W  
S  
A  
B  
O  
U  
T  
M  
E  
M  
B  
E  
R  
S

ical issue. During the course of a year and a half, she spent much time at NYU Medical Center, interviewed his family, staff, the families of his patients, etc. She described it as a very challenging and rewarding experience.

Exciting news from Pam Akin who recently travelled to China to adopt a baby girl - Faye Victoria ("Tori"). Pam says Tori is adjusting beautifully to her new home and has just celebrated her first birthday which happens to be Pam's birthday also. Congratulations to you both!

**Judy Munson** has a new job and a new address: Director of Advancement for Tampa Bay Performing Arts Center. Her primary responsibilities will be fund-raising and marketing, and she may be reached at 222-1030. Mail to TBPAC, Post Office Box 518, Tampa 33601.

**Marsha Rydberg** has been named chair of the Financial Institutions Litigation Committee of the American Bar Assn's Business Law Section. While she doesn't have a new job, she does have a new address: 500 East Kennedy Blvd., #200, Tampa 33602. Phone remains the same.

**Jan Roberts** has been signed by Speakers Connection, a global program bureau, and will be represented by them on the lecture circuit. She is scheduled to be the keynote speaker for the American Business Women's Association's Spring Conference in Tampa, April 2, speaking on the subject of rediscovering a sense of fun. Jan will present a free seminar in Tampa, 6 to 8 p.m. on March 10 on "Goddesses: Women's Forgotten Roots"; anyone interested may contact her at 254-8454.

**Barbara Ann Blue** has been appointed to a three-year term on the Florida Chamber of Commerce Board of Directors; she also serves on the Chamber's Education Committee.

10921 211011 13001  
P.O. Box 1646  
Tampa Florida 33601

ATHENA SOCIETY  
INC.

ATHENA  
INVITED TO  
TIA MEETING

Invitation to the International Alliance  
Washington Briefing: New Leadership  
Thursday, April 1 & Friday, April 2, 1993.

April 1 :

Media Perspective, National Press Club  
6 - 8:30 p.m. Reception and dinner  
Speakers: Nancy Woodhull & Barbara Reynolds,  
USA Today  
Cokie Roberts, ABC  
Leslie Stahl, CBS, invited.

April 2: Briefing, The Watergate Hotel  
8 a.m. - 4:30 p.m.

Universal Access to Quality Health Care:  
Strategies for Reform.

Speakers: Donna Shalala, Secretary of Health  
and Human Services, invited  
Pam Maraldo, Planned Parenthood

Environmental Policy: The Trade Offs

Speakers: Carol Brauner, Environ. Protection Ag.  
Claudine Schneider, Chair, Renew America.

Women in the Senate

Speakers: Carol Mosley Braun (Illinois)  
Diane Feinstein (California).

5:00 - 6:00 p.m. Reception at Argentine Embassy

Watergate (800-424-2736) Reserve by 3/4; Mention TIA  
Briefing. \$165 single; \$82.50 double.

Thursday Dinner \$55; Friday - \$170. To reserve, call  
TIA: 410/472-4221.

# athena society inc.

## BRIEFINGS

President  
Juel Smith  
974-4727

President-Elect  
Susan Grady  
251-8481

VP/Membership  
Katie Brown  
949-6225

VP/Programs  
Lee Leavengood  
974-2403

Secretary  
Ruth Himes  
223-7000

Treasurer  
Miriam Mason  
251-9200

Immediate Past Pres.  
Moiria Burke  
971-2715

Directors  
Gay Culverhouse  
870-2700

Pamela Jordan  
962-4511

Jan Platt  
286-7588

Bonnie Saks  
254-5442

Delia Sanchez  
223-1845

Miriam Stamps  
974-4201

Administrator  
Eleanor Hubbard  
251-9172

WHEN: Thursday, February 4, 1993

11:55 a.m. - luncheon

WHERE: Hyatt Regency Tampa  
211 No. Tampa Street

COST: Guests - \$20.00

PROGRAM: "Our Role in the Community's Protection"

SPEAKERS: Eduardo Gonzalez, Chief  
Tampa Police Department

Cal Henderson, Sheriff  
Hillsborough County Sheriff's Department

PANELISTS: Questioning the speakers will be  
Nancy Ford  
Delia Sanchez  
Sandra Wilson  
Gwynne Young

Crime and its impact on the citizenry is one of the topics of greatest concern across the country. Hear how Tampa is grappling with the problem. Cards will be available for audience members to write questions for the speakers. As always, guests are welcome.

A native-born Tampan, Eduardo Gonzalez has been Chief of Police since March, 1992. He returned to Tampa from Miami where he held positions in the Metro-Dade Police Department since 1965. He is a graduate of the FBI National Academy and has a Bachelors Degree in Criminal Justice from Florida International University. Gonzalez served in a variety of assignments in Miami from uniform patrol to Deputy Director of the Police Department, his position when he left last year.

Also a native Tampan, Cal Henderson is a graduate of Chamberlain High School. He began his career in 1965 with the Tampa Police Department; in 1967 he joined the U.S. Border Patrol and then served a tour of duty as a civilian with the CIA in South Vietnam. In '69 Henderson joined the Hillsborough County Sheriff's Department as a patrolman and worked his way up through the ranks to colonel prior to his recent election as Sheriff of Hillsborough County.

To reserve for the luncheon, return enclosed card by February 1 or call Eleanor Hubbard at 251-9172.

**MORE ATHENA  
SUPPORT**

Please take note of a new "service" to Athena members: Any member involved in a project who would like Athena support in the form of having a table at an award luncheon, installation, etc., may call Eleanor Hubbard with newsletter information as early as possible. Such a table was formed for the recent installation of Gay Culverhouse as President of the Greater Tampa Chamber of Commerce.

**KRIVANEK TO  
BE HONORED**

Another such opportunity is coming on February 17 when Robin Krivanek will be one of nine volunteers honored by the National Conference of Christian and Jews at the Wyndham Harbour Island Hotel. Cost is \$25; checks should be made out to Athena (P.O. Box 1666, Tampa 33601) and received prior to February 11. Table will seat ten including Robin and her husband.

**HOLIDAY  
BREAKS!**

Around the holidays, Paddy Moses, Patti Breckenridge, Linda Albert and Kathy Betancourt were all on either crutches or canes with broken toes or (in Kathy's case) a foot. Paddy says we have to seriously start thinking about building that "home" for Athena members!

**ATHENA SEEKS  
PRIZE DONOR**

The Athena Society is sponsoring an essay contest in the public and private schools throughout Hillsborough County to promote and encourage the reading of the book we commissioned entitled "A History of Women in Tampa". The contest will begin on March 1 and all essays will be due by April 1, 1993. Two prizes will be offered: one for the best 300-word essay written by a 7th-9th grade student and one for the best 300-word essay written by a 10th-12th grade student. Each prize includes \$100 cash, two tickets to Busch Gardens, a trophy or plaque and recognition in the Tampa Tribune. The \$200 cash has been pledged by two Athena members who wish to remain anonymous, and the four Busch Gardens tickets have been pledged by Elaine College. Patti Breckenridge will arrange for recognition in The Tampa Tribune.

The success of the contest will depend, in great part, on the willingness of teachers to promote participation by their students. In addition to the above prizes, school officials suggested we offer a donation to the winning students' schools in honor of the teachers who encouraged their participation in the contest. The committee would like to offer two \$50 donations in the teachers' names which would be ear-marked for those teachers to use for classroom supplies. If you are interested in donating one or both of the \$50 awards for recognition of those teachers, please call Eleanor Hubbard at 251-9172. The donations may be made either with or without recognition. We would appreciate a response as quickly as possible.

M'SHIP FORMS  
DUE FEB. 2

Last call for membership nomination forms - due no later than February 2; deadline is firm. The Membership Committee reminds sponsors that no forms will be considered complete without \$50 check for sponsorship. Questions may be directed to Membership Vice President Katie Brown, 949-6225.

SEMINAR SET  
FOR MARCH 10

Another important date: Wednesday, March 10, for the Athena seminar entitled "We, the Future: Exploring Trends in Power and Leadership". Scheduled from 11:30 to 4:30 p.m. at the Tampa Convention Center, cost will be \$55 per person.

The speakers are internationally known futurists/researchers, Stewart Lytle and Jeff Hallett. The report they will be highlighting is being updated specifically for this seminar and covers the current and emerging leadership structure within Tampa and Hillsborough County. Additional details and reservation forms will be available at the February 4 luncheon meeting. Plan on attending - it'll be the hottest ticket in town!

N  
E M  
W E  
S M  
B  
A E  
B R  
O S  
U  
T

**Sandy Frye** has been elected 1993 President of the Florida Motion Picture and Television Assn., Tampa Bay Chapter. There are 13 chapters statewide encouraging film and TV production in the state.

**Delia Sanchez** has been appointed to the National Assn. of Social Workers PACE (Political Association for Candidate Election) Board of Trustees. Delia will be attending the Board's meeting and conferences in Washington, D.C. during her two-year term.

**Anne Kantor** is currently in Jakarta to attend the opening of her daughter Janet Echelman's one-woman art exhibition. The show is sponsored by the Jakarta Post and the opening ceremony will be hosted by the American Ambassador and Indonesian National Minister of Culture. Janet, the first American to be given this honor, will return in February to resume teaching at the Harvard Graduate School of Design.

**Barbara Pankau** has been installed for a two-year term as President of the Florida Academy of Hospital Attorneys.

athena society  
inc.  
P.O. Box 1666  
Tampa, Florida 33601

N  
E  
W  
S  
  
A  
B  
O  
U  
T  
  
M  
E  
M  
B  
E  
R  
S

The Jan Abell Kenneth Garcia Partnership Architects has received the 1992 Award of Merit from the Florida Trust for Historic Preservation for their restoration of the Edson Keith House at Phillippi Estate Park in Sarasota. The Florida Preservation Awards are presented annually to honor the best preservation work in the State. The award was presented to Sarasota County Department of Parks and Recreation and Jan Abell, Project Architect, at the annual awards ceremony held in conjunction with the recent National Trust for Historic Preservation Convention in Miami.

Patti Breckenridge recently hosted a three-day journalism conference for the Southern Newspaper Publishers Assn. The conference attracted editors and writers from Florida, Arkansas, Oklahoma, Texas, Louisiana and Virginia. Patti also has been invited to conduct diversity training for managers at newspapers in Virginia and North Carolina. She provided a similar program in 1992 that reached all 400 Tribune news staffers, 14 at a time.

Mickey Tagliarini was honored last month by the Tampa/Hillsborough County Human Rights Council for her lifetime of interest, dedication and involvement in a wide range of Human Rights issues. At the 19th Annual Human Rights Week Celebration, she was presented with a plaque and a standing ovation.

# athena society inc.

## BRIEFINGS



WHEN: Thursday, January 7, 1993  
11:55 a.m. - luncheon

WHERE: Tampa Westshore Marriott  
1001 No. Westshore Blvd.

COST: Guests - \$20.00 (Note new fee.)

PROGRAM: "Profiles of Tampa's Museums"

SPEAKERS: Deirdre Bibby, Executive Director  
Museum of African American Art  
Permanent home of the classical Barnett  
Aden Art Collection devoted to study,  
preservation and regular exhibition of  
African American visual arts.

Cynthia Gandee, Director  
Henry B. Plant Museum  
Artwork and furniture from Tampa Bay  
Hotel circa 1891.

Marilyn Mars, Assistant Director  
Tampa Museum of Art  
Permanent collections of American paint-  
ings, prints, photographs and antiquities  
of ancient Greece and Southern Italy.

Margaret Miller, Director/Professor  
USF Contemporary Art Museum  
Permanent collections and changing exhibi-  
tions devoted to experimental, investiga-  
tive and advanced art by nationally and  
internationally prominent artists.

Wit Ostrenko, Executive Director  
Museum of Science and Industry  
Science/education museum with hands-on  
display for visitors of all ages.

Each panelist will present a brief slide profile and be available for questions afterwards - a wonderful opportunity to learn about Tampa's rich visual resources. As always, guests are welcome.

To reserve for the luncheon, return enclosed card by January 4 or call Eleanor Hubbard at 251-9172.





LETTER  
FROM THE  
PRESIDENT



CHARITY  
CHECKS  
WELCOME

SEND IN  
SURVEYS!

Dear Members:

Special thanks to Candy and John Olson for opening their beautifully decorated home to Athena for the Holiday Party on Dec. 12; everything was beautiful. Also, kudos to Rhonda Trainor and the hospitality committee (RoseAnne Bowers, Linda Fries, Alice Luckey, Suzy McLain, Judy Munson, Candy Olson, Deanne Roberts, Barbara Romano) for the delicious buffet they prepared. Over 100 attended and everyone truly enjoyed the food, hospitality and entertainment. Was a smashing success!

The next months will be very exciting due to the many activities and projects being planned by our committees. Therefore an Athena Update (Open Forum) is planned for

Tuesday, January 26 6 to 8 p.m.  
Moirra Burke's office 4600 No. Habana Suite 2  
Ample parking in well-lighted lot

You'll be updated on membership, seminar, Young Women of Promise, brochure and other committees by the chair or vice-chair. You'll have the opportunity to make suggestions or ask questions, so plan on attending. Refreshments will be available.

Because the seminar is a major project, we'll need your support and physical presence. We are therefore urging each member to not only attend but be responsible for at least three other people. Just think, with 132 members, we would have over 500 in attendance!

Special thanks to those who donated \$25 to sponsor Athena charity projects throughout the year. I look forward to seeing all of you at the January meeting and our Athena Update on January 26. Happy New Year!

Juel S. Smith  
President

Reminder: Your \$25 check for charity is still most welcome and may be mailed to P.O. Box 1666, Tampa, 33601. A very sincere "thank you" to those who have already given; sharing is what this season is about. These funds will be used to support charities all year long in the name of Athena. As has been tradition for several years, Athena sponsored a holiday celebration for two local families headed by single female parents, both with three children. Clothing and toys of their choice plus the family's special holiday meal were provided by Athena. Our special thanks to Athena's shopper/coordinators: Juel Smith and Rhoda Franklin.

Survey Alert! You young overworked supermom/executive types: We're just about to wrap it up and need your surveys! Please get them in the mail before January 1. Also check your listing on enclosed sheet and contact Sandy Frye if you wish to make a change.



MEMBERSHIP  
REMINDER



SEMINAR  
SET FOR  
MARCH 10

Notes from Membership VP Katie Brown: Please bear in mind that the Membership Committee will be responsive to recommendations made by past Membership Committees as follows:

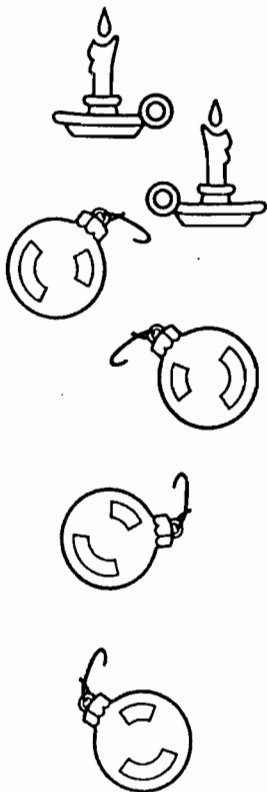
1. We seek diversity of occupations among Athena members.
2. We seek people with positions of responsibility.
3. We seek people with a record of community involvement.

Remember, the Membership Committee must have completed nomination forms (with co-sponsors' signatures and \$50 sponsor's check) by February 2. Nominations received after that date will not be considered. Call Eleanor Hubbard (251-9172) for nomination forms; call me (949-6225) or any member of the committee if you have questions.

Athena's biennial seminar will be held on Wednesday, March 10, at the Tampa Convention Center. Format will be noon to approximately 4:30 p.m. Cost - including lunch - will be \$55. Please mark your own calendar and make others aware of that date.

The seminar will deal with future trends, power and leadership particularly in the Tampa Bay area. The speakers, Stuart Lytle and Jeff Hallett, are futurists/researchers with international reputations. Among the subjects covered will be the dynamics of power in cities; the role of second-tier cities; trends in community empowerment and how communities function and affect change.

The seminar committee also plans a panel of local citizens sharing their hopes for the future of our community. All seminar attendees will receive a copy of the report, 1991 updated, by the Dallas-based Metro Group (Stuart Lytle's company) on the city of Tampa's power structure.



*Happy  
Holidays*



Tampa, Florida 33601  
P.O. Box 1666

**athena society**  
Inc.

N  
E  
W  
S  
  
A  
B  
O  
U  
T  
  
M  
E  
M  
B  
E  
R  
S

**Nancy Ford** is making the ultimate career change: retirement. This is her third try so (in her words) "let's just say I'm retired until further notice". After December she can be reached at 2937 Bayshore Court, Tampa, 33611, 839-8727. St. Joseph's loss is Athena's gain, as Nancy has agreed to serve as Public Relations chair for the remainder of the year. Our best wishes to her as she enters this new (though possibly temporary) phase of life.

Sad to report the impending loss of two members: **Robin Krivanek's** term as Supervisor of Elections will expire on January 4 though she actually left in early December, retiring after 18 years in that position. She and husband Jack McAlister will be spending the next several months enjoying their home in Sanibel while planning trips for the coming year. If you're going down to that area, Robin invites you to phone: 813/395-0927. One of the very early Athena members, she will be sorely missed.

Though she's a brand new member, **Wanda Lewis-Campbell** has made many friends in Athena and will also be very much missed. She'll be leaving for Alexandria, Virginia in late January or early February as the result of her husband's promotion with the Campbell Soup Company. She doesn't plan to begin work immediately; she'll spend the first several months getting settled and taking care of her two young children.

**Linda Hanna** and **Deborah Paris** have formed a new law firm - Paris & Hanna, P.A. - and are located at 120 Hyde Park Place #100, Tampa, 33606. Phone: 253-3322. They will practice in the areas of business and corporate law, estates and trusts, taxation, real estate transactions and litigations, workouts and bankruptcy. (Please make address/phone changes in your directory.)

Most call her **Mayor** but you can now also call her **Grandma**: **Sandy Freedman's** first grandchild, **Alexis Lee**, was born November 9 to **Sheri** and **Rob Freedman** of Safety Harbor. Congratulations!

**Diane Bostow** and **Hartley Mellish** have welcomed a new member to their family: **Luke Bostow Mellish**, born November 2 at 7 lbs. 6 oz. Two-year-old **Jenny** is tickled about her new baby brother.

**Pat Frank** is recovering from surgery earlier this month, doing fine and enjoying her holidays.

